

RUEDAS, BASES Y PATAS

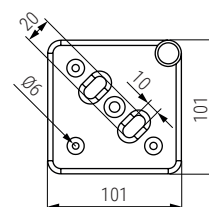
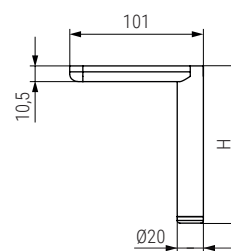


CASTERS, BASES AND LEGS



TROYA Pata metálica H120-180-250

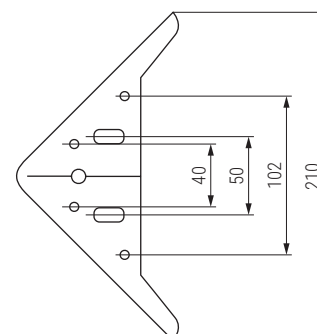
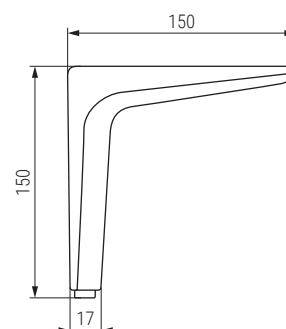
Sofa leg




Código Code	H	Material	Acabado Finish	
1439.421	120	acero/steel	negro mate/black matt	50
1439.422	180	acero/steel	negro mate/black matt	50
1439.423	250	acero/steel	negro mate/black matt	40

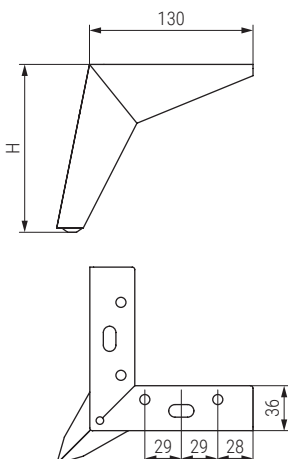
CLAY Pata metálica H150

Sofa leg



Código Code	Material	Acabado Finish	
1439.342	acero/steel	níquel oscuro/black chrome	50
1439.343	acero/steel	negro mate/black matt	50
1439.350	acero/steel	cromo/chrome	50

TOGO Pata metálica H100 - H120 - H135
Sofa leg




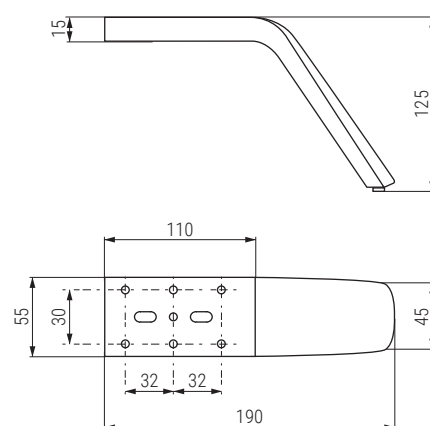
Código Code	H	Material	Acabado Finish	
1439.466	100	acero/steel	blanco/white	50
1439.347	100	acero/steel	níquel oscuro/black chrome	50
1439.387	100	acero/steel	cromo/chrome	50
1439.374	100	acero/steel	negro mate/black matt	50
1439.418	120	acero/steel	negro mate/black matt	50
1439.386	135	acero/steel	blanco/white	40
1439.321	135	acero/steel	níquel oscuro/black chrome	50
1439.320	135	acero/steel	cromo/chrome	40
1439.362	135	acero/steel	negro mate/black matt	40
1439.361	135	acero/steel	marrón/brown	50
1439.406	135	acero/steel	latón cepillado/brushed brass matt	50
1439.375	135	acero/steel	cobre/copper	50

HORSY Pata metálica H125

Sofa leg




Código Code	Material	Acabado Finish	
1439.219	acero/steel	cromo/chrome	50
1439.220	acero/steel	negro mate/black matt	50
1439.222	acero/steel	plomo/lead	50
1439.413	acero/steel	latón cepillado/brushed brass matt	50

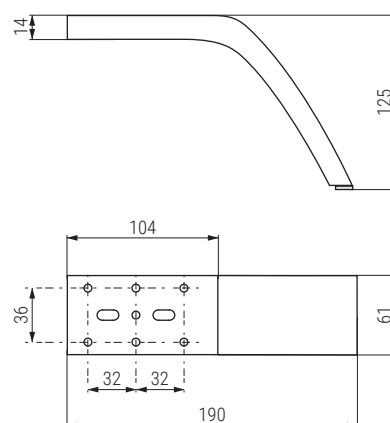


PENT Pata metálica H125

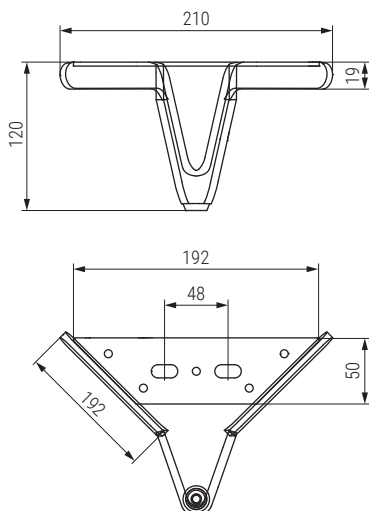
Sofa leg



Código Code	Material	Acabado Finish	
1439.215	acero/steel	chrome/chrome	50
1439.217	acero/steel	negro mate/black matt	50

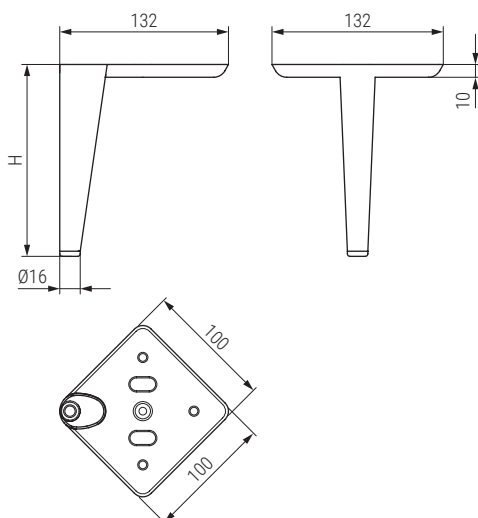



VINTAGE Pata metálica H120
Sofa leg



Código Code	Material	Acabado Finish	
1439.328	acero/steel	cromo/chrome	30
1439.329	acero/steel	blanco mate/white matt	30
1439.330	acero/steel	níquel oscuro/black chrome	30
1439.316	acero/steel	negro mate/black matt	30

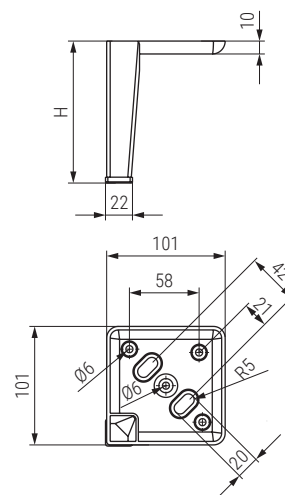
BIRDIE Pata metálica H120 - H150 - H180
Sofa leg




Código Code	H	Material	Acabado Finish	
9034.596	120	acero/steel	cromo/chrome	50
9034.597	120	acero/steel	níquel oscuro/black chrome	50
9034.606	120	acero/steel	negro mate/black matt	50
1439.415	120	acero/steel	latón cepillado/brushed brass matt	50
9034.593	150	acero/steel	cromo/chrome	50
9034.594	150	acero/steel	níquel oscuro/black chrome	50
9034.598	150	acero/steel	negro mate/black matt	50
1439.414	150	acero/steel	latón cepillado/brushed brass matt	50
9034.608	180	acero/steel	negro mate/black matt	50

HAMMER Pata metálica H100-H120

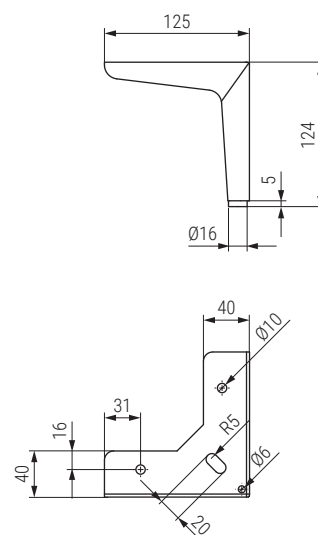
Sofa leg




Código Code	H	Material	Acabado Finish	
1439.471	100	acero/steel	negro mate/black matt	50
1439.379	120	acero/steel	negro mate/black matt	40

CLAYTON Pata metálica H120

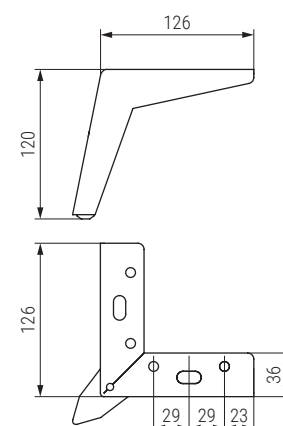
Sofa leg




Código Code	Material	Acabado Finish	
1439.388	acero/steel	cromo/chrome	40
1439.389	acero/steel	negro/black	40

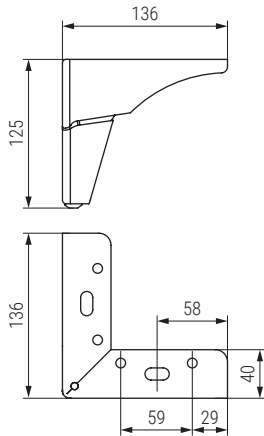
TEE Pata metálica H120

Sofa leg



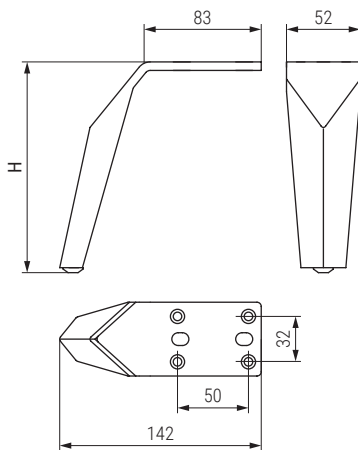
Código Code	Material	Acabado Finish	
1439.377	acero/steel	negro mate/black matt	50

VERSUS Pata metálica H125
Sofa leg



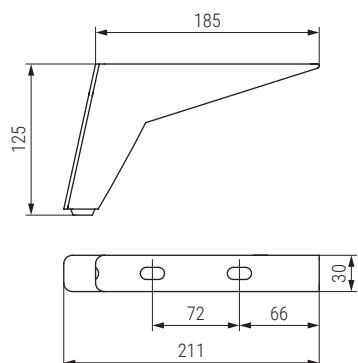
Código Code	Material	Acabado Finish	
1439.366	acero/steel	negro mate/black matt	40


RIVER Pata metálica H100-150
Sofa leg



Código Code	H	Material	Acabado Finish	
1439.357	150	acero/steel	cromo/chrome	40
1439.476	100	acero/steel	negro mate/black matt	50
1439.358	150	acero/steel	negro mate/black matt	40

CORFU Pata metálica H125
Sofa leg



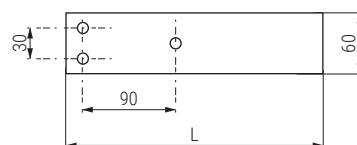
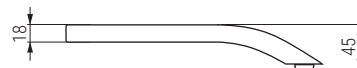
Código Code	Material	Acabado Finish	
1439.346	acero/steel	negro mate/black matt	30
1439.384	acero/steel	cromo/chrome	30

TRAMPOLIN Pata metálica H45 L175 - L250

Sofa leg




Código Code	L	Material	Acabado Finish	
1439.365	175	acero/steel	cromo/chrome	50
1439.213	250	acero/steel	cromo/chrome	50
1439.214	250	acero/steel	níquel oscuro/black chrome	50

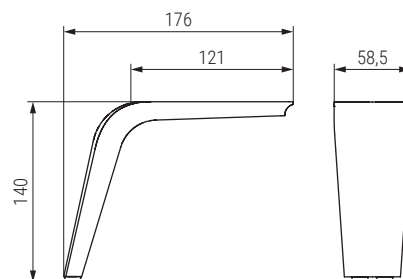


TESIS Pata metálica H140

Sofa leg



Código Code	Material	Acabado Finish	
1439.326	aluminio/aluminum	negro mate/black matt	30
1439.391	aluminio/aluminum	marrón mate/brown matt	30

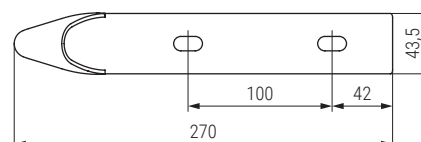
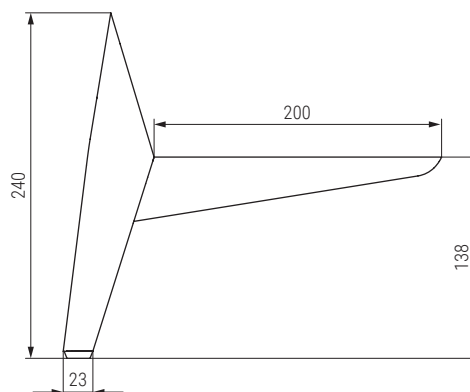


SHOT Pata metálica H138

Sofa leg

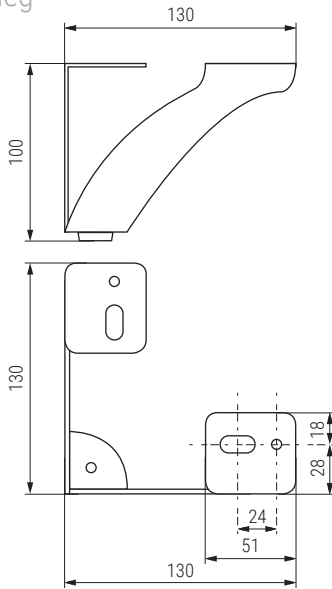



Código Code	Material	Acabado Finish	
1439.344	acero/steel	negro mate/black matt	20



VINET Pata metálica H100

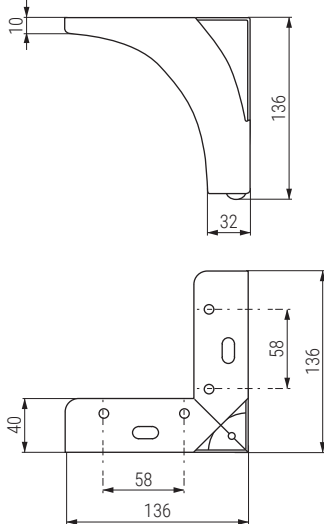
Sofa leg



Código Code	Material	Acabado Finish	
1439.109	acero/steel	cromo/chrome	40
1439.110	acero/steel	oro viejo/old gold	40
1439.373	acero/steel	negro mate/black matt	40

VERNO Pata metálica H135

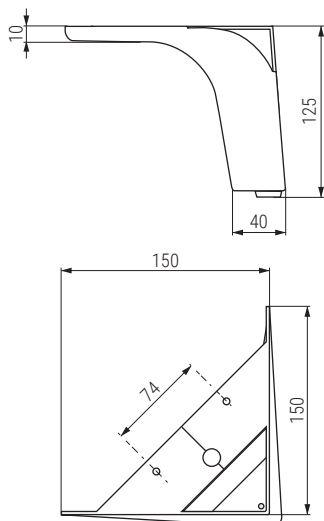
Sofa leg




Código Code	Material	Acabado Finish	
1439.202	acero/steel	cromo/chrome	30

VITAL Pata metálica H125

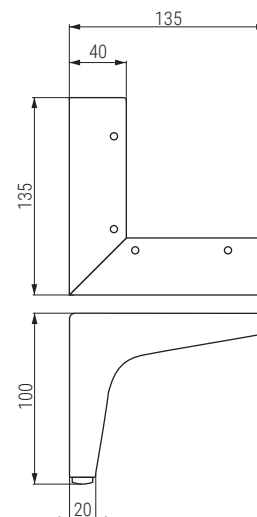
Sofa leg




Código Code	Material	Acabado Finish	
1439.200	acero/steel	cromo/chrome	40
1439.198	acero/steel	negro mate/black matt	40

HILDA Pata metálica H100

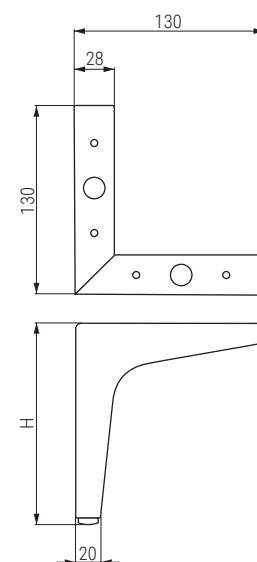
Sofa leg



Código Code	Material	Acabado Finish	
656.34	acero/steel	cromo/chrome	40

DAYRA Pata metálica H100 - H135 - H155

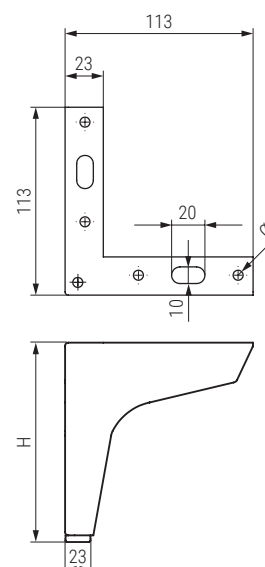
Sofa leg



Código Code	H	Material	Acabado Finish	
1439.407	100	acero/steel	negro mate/black matt	40
1439.41	135	acero/steel	cromo/chrome	60
1439.39	155	acero/steel	cromo/chrome	40

DYRA Pata metálica H100 - H120

Sofa leg

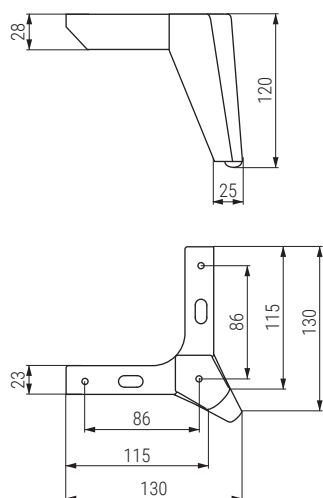



ACTUALIZADO EL DÍA 02/02/2024

Código Code	H	Material	Acabado Finish	
9034.641	100	acero/steel	negro mate/black matt	60
9034.640	120	acero/steel	negro mate/black matt	60
9034.642	120	acero/steel	blanco mate/white matt	60

VECTOR Pata metálica H120

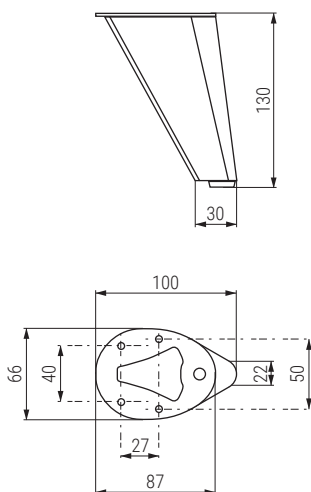
Sofa leg




Código Code	Material	Acabado Finish	
1439.205	acero/steel	chrome/chrome	50
1439.207	acero/steel	negro mate/black matt	50
1439.327	acero/steel	blanco/white	50
1439.411	acero/steel	plomo cepillado/brushed lead	50
1439.412	acero/steel	latón cepillado/brushed brass matt	50

CONE Pata metálica H130

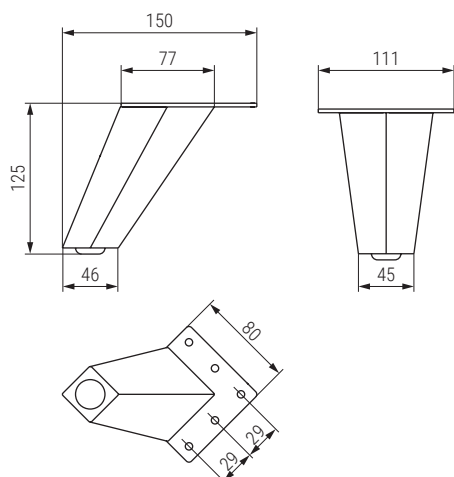
Sofa leg



Código Code	Material	Acabado Finish	
1439.224	acero/steel	níquel oscuro/black chrome	60

RAMPA Pata metálica H125

Sofa leg




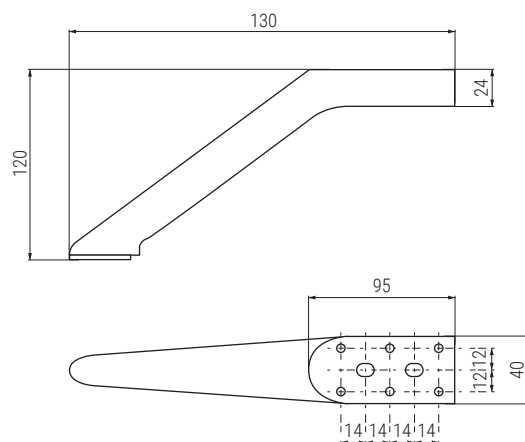
Código Code	Material	Acabado Finish	
1439.325	acero/steel	níquel oscuro/black chrome	40

NAYLA Pata metálica H120-H150

Sofa leg




Código Code	Material	Acabado Finish	
1439.143	acero/steel	negro mate/black matt	50
1439.144	acero/steel	níquel oscuro/black chrome	50
1439.132	acero/steel	cromo/chrom	50

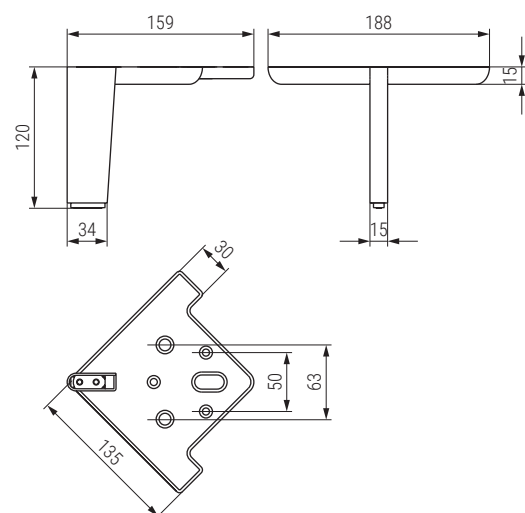


LINE Pata H120

Sofa leg




Código Code	Material	Acabado Finish	
1439.351	acero/steel	negro mate/black matt	30

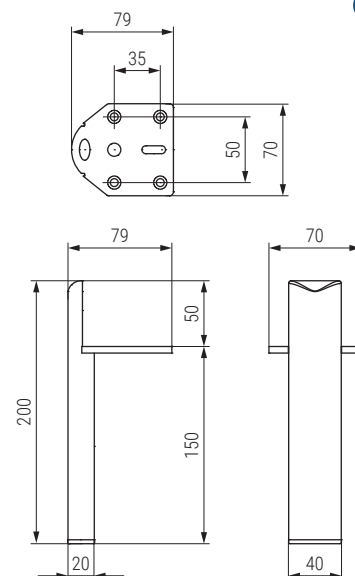


SUPP Pata metálica H150-H200

Sofa leg

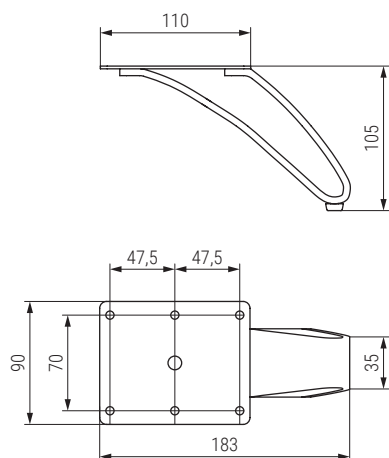



Código Code	Material	Acabado Finish	
1439.359	acero/steel	negro mate/black matt	40



SLOT Pata metálica H105

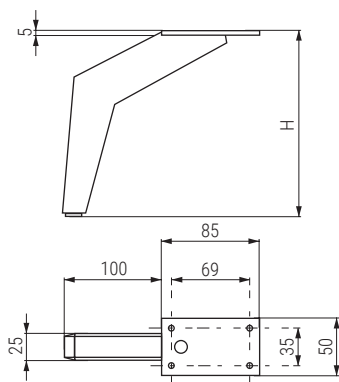
Sofa leg



Código Code	Material	Acabado Finish	
1439.340	acero/steel	cromo/chrome	20

KATAR Pata metálica H130 - H160

Sofa leg

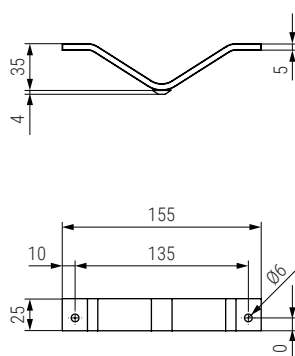



Código Code	H	Material	Acabado Finish	
1439.402	130	acero/steel	cromo/chrome	40
1439.94	160	acero/steel	cromo/chrome	40
1439.403	130	acero/steel	negro mate/black matt	40
1439.381	160	acero/steel	negro mate/black matt	40

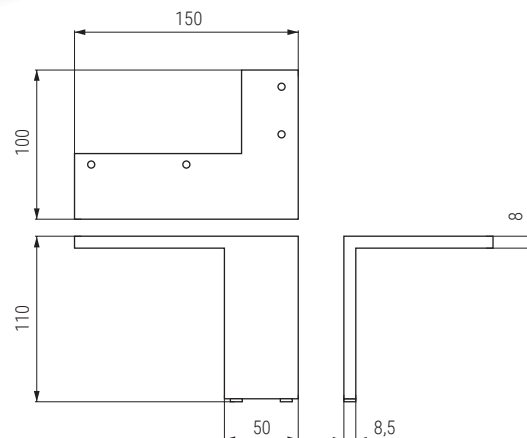


V MASTER Pata metálica H40


Sofa leg

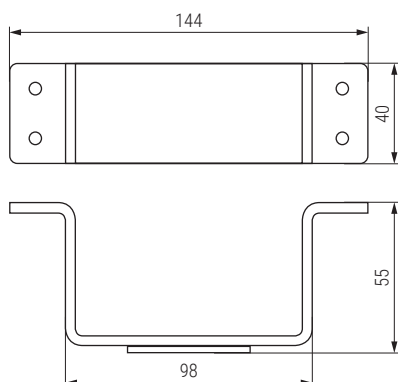



Código Code	Material	Acabado Finish	
9034.628	acero/steel	cromo/chrome	30

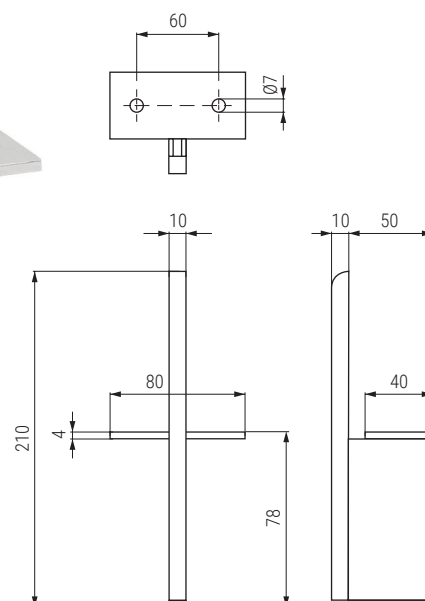
ROCHA NEW Pata metálica H110
Sofa leg


- 1 set 4 patas.
- 1 set 4 legs.

Código Code	Material	Acabado Finish	
1435.101	zamak/zamac	cromo/chrome	20set
1435.102	zamak/zamac	gris RAL 9006/grey RAL	20set
1435.103	zamak/zamac	negro mate/black matt	20set

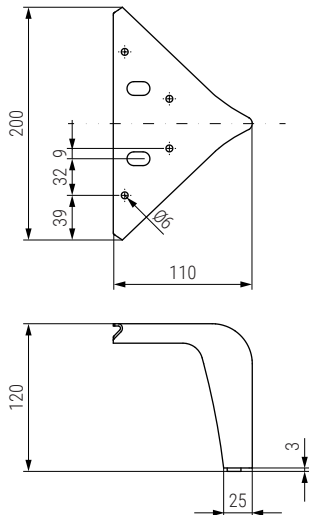
BRIDGE Pata H55
Sofa leg


Código Code	Material	Acabado Finish	
9034.590	acero/steel	cromo/chrome	60

TECLA Pata. metálica H78
Sofa leg

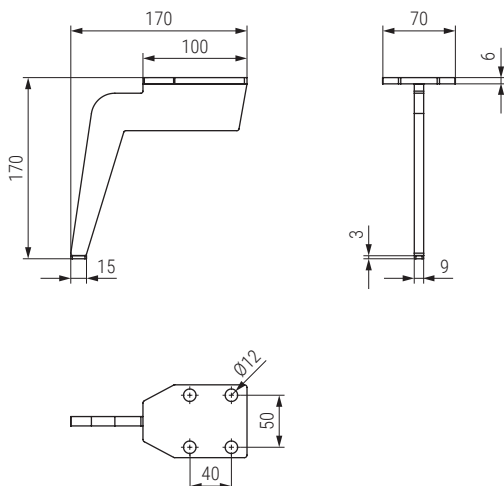
Código Code	Material	Acabado Finish	
311.4	acero/steel	cromo/chrome	60

CLARK Pata metálica H120
Sofa leg



Código Code	Material	Acabado Finish	
9034.624	acero/steel	cromo/chrome	40
9034.625	acero/steel	negro mate/black matt	40

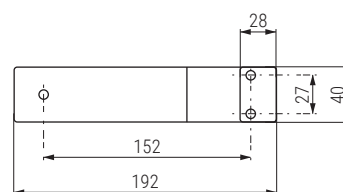
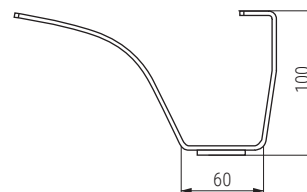
TALIA Pata metálica H170
Sofa leg



Código Code	Material	Acabado Finish	
9034.615	acero/steel	negro mate/black matt	25

VISTO Pata metálica H100

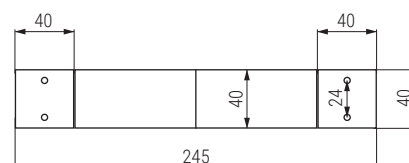
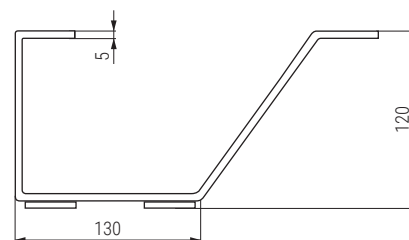
Sofa leg



Código Code	Material	Acabado Finish	
1439.227	acero/steel	cromo/chrome	40
1439.228	acero/steel	negro RAL/black RAL	40

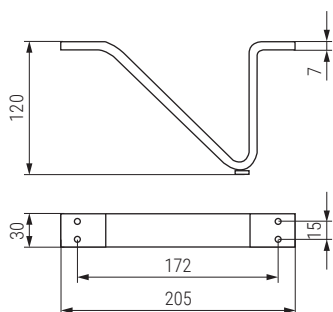
VERA Pata metálica H120


Sofa leg



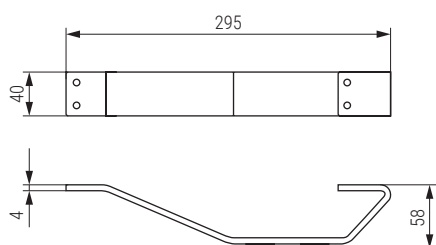
Código Code	Material	Acabado Finish	
1439.392	acero/steel	negro mate/black matt	32


VELVET Pata metálica H120
Sofa leg



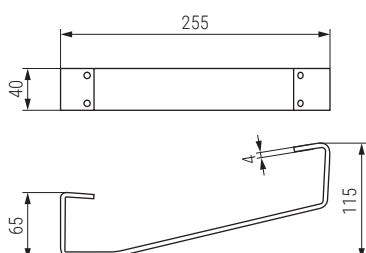
Código Code	Material	Acabado Finish	
1439.78	acero/steel	cromo/chrome	30


LOW Pata metálica H60
Sofa leg



Código Code	Material	Acabado Finish	
1439.363	acero/steel	cromo/chrome	30
1439.463	acero/steel	negro mate/black matt	50

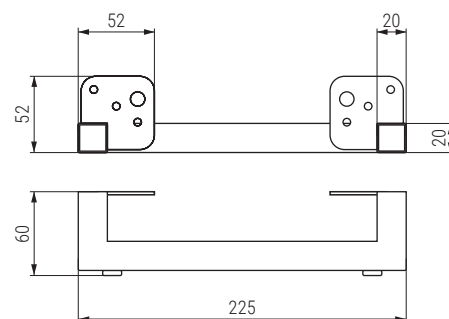
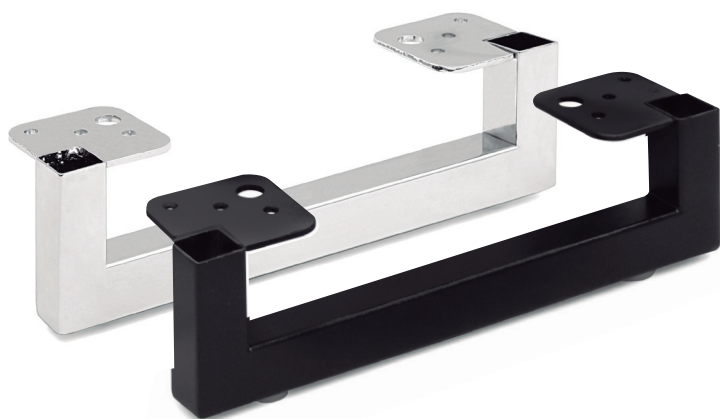
BOAT Pata metálica H65/H115
Sofa leg



Código Code	Material	Acabado Finish	
1439.370	acero/steel	cromo/chrome	30

KASTA Pata metálica H60

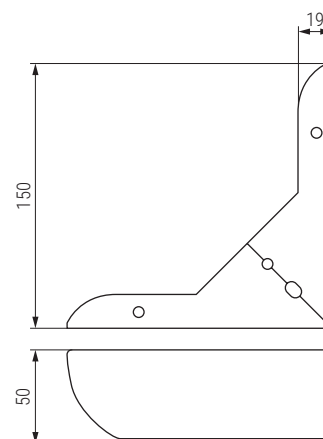
Sofa leg




Código Code	Material	Acabado Finish	
1439.30	acero/steel	cromo/chrome	40
1439.364	acero/steel	negro mate/black matt	40

BRAVA Pata metálica H50

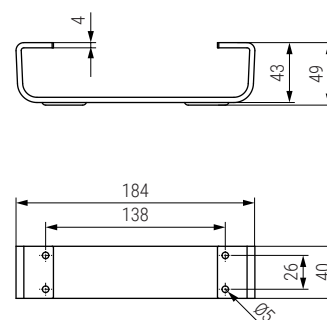
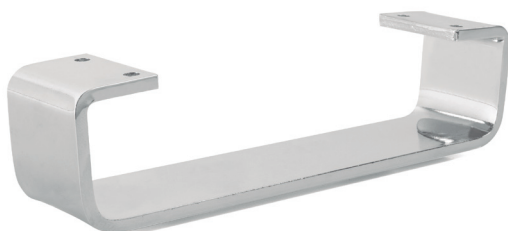
Sofa leg




Código Code	Material	Acabado Finish	
1439.66	hierro/steel	cromo/chrome	60

NIMIAN Pata metálica H49

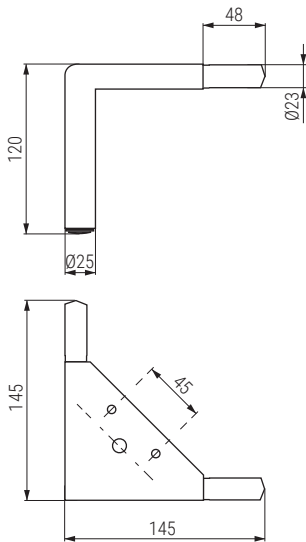
Sofa leg




Código Code	Material	Acabado Finish	
9034.629	acero/steel	cromo/chrome	30

TEOS Pata metálica H120

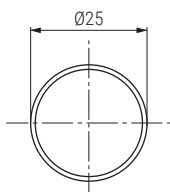
Sofa leg




Código Code	Material	Acabado Finish	
1439.404	zamak/zamac	cromo/chrome	30
1439.405	zamak/zamac	negro mate/black matt	30

STOR Tubo redondo Ø25

Tube



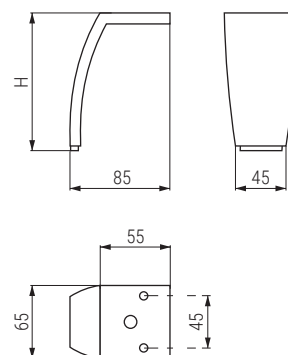
- Barras de 3 metros.
- 3 meters bar.

Código Code	Material	Acabado Finish	
130.54	acero/steel	cromo/chrome	9 barras/9 bars
130.64	acero/steel	negro mate/black matt	9 barras/9 bars



PENNY Pata H100 - H120

Sofa leg

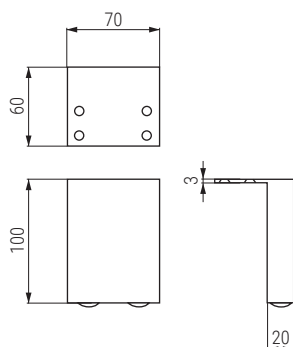


Código Code	H	Material	Acabado Finish	
1439.83	100	acero/steel	cromo/chrome	80
1439.84	100	acero/steel	níquel satinado/satin nickel	80
1439.85	120	acero/steel	cromo/chrome	60
1439.86	120	acero/steel	níquel satinado/satin nickel	60
1439.376	120	acero/steel	negro mate/black matt	60



LIANA Pata metálica H100

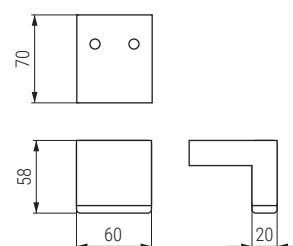
Sofa leg




Código Code	Material	Acabado Finish	
1439.44	acero/steel	cromo/chrome	60

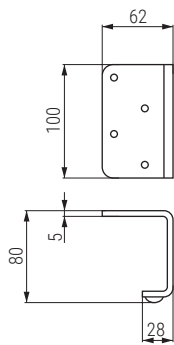
ROXANNE Pata metálica H58


Sofa leg



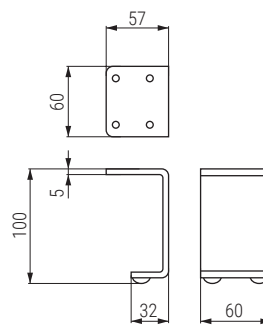
Código Code	Material	Acabado Finish	
656.26	acero/steel	cromo/chrome	70

RUDY Pata metálica H80
Sofa leg



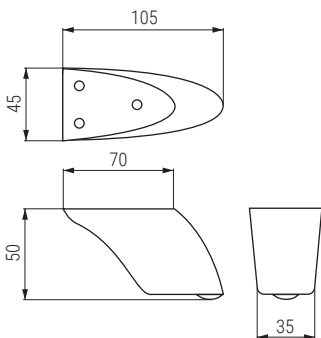
Código Code	Material	Acabado Finish	
1439.19	acero/steel	cromo/chrome	40


TULA Pata metálica H100
Sofa leg



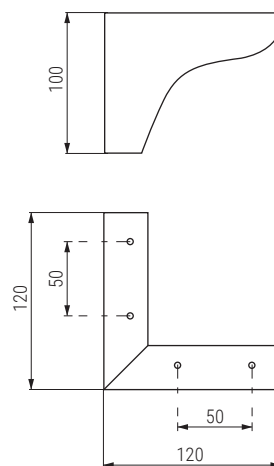
Código Code	Material	Acabado Finish	
1439.22	acero/steel	cromo/chrome	40


ASIA Pata metálica H50
Sofa leg



Código Code	Material	Acabado Finish	
1439.45	hierro/steel	cromo/chrome	100

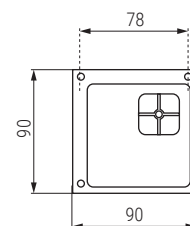
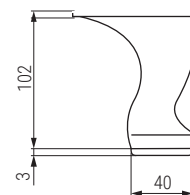
ASPEN Pata metálica H100
Sofa leg




Código Code	Material	Acabado Finish	
1439.76	hierro/steel	cromo/chrome	60
1439.390	hierro/steel	negro/black	60

DARAY Pata metálica H105

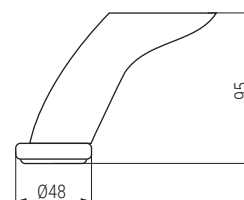
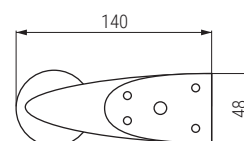
Sofa leg




Código Code	Material	Acabado Finish	
1439.62	hierro/steel	zamak/zamac	40

CLOE Pata metálica H95

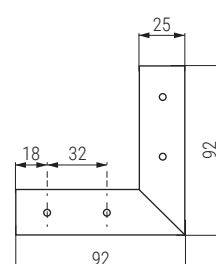
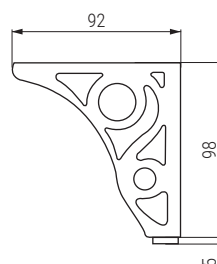
Sofa leg



Código Code	Material	Acabado Finish	
1439.43	hierro/steel	cromo/chrome	100

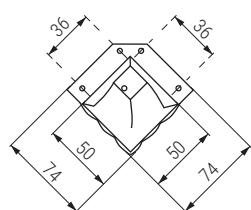
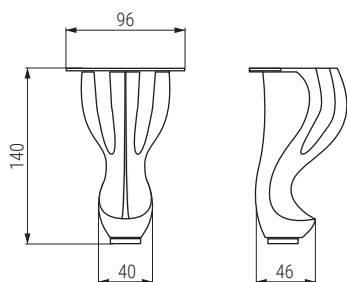
CLASS Pata metálica H104


Sofa leg



Código Code	Material	Acabado Finish	
1386.179	acero/steel	cromo/chrome	150
1386.180	acero/steel	oro/gold	150

SARAY Pata metálica H140
Sofa leg



Código Code	Material	Acabado Finish	
1439.92	zamak/zamac	cromo/chrome	40
1439.93	zamak/zamac	bronce/bronze	40
1439.97	zamak/zamac	cobre/copper	40



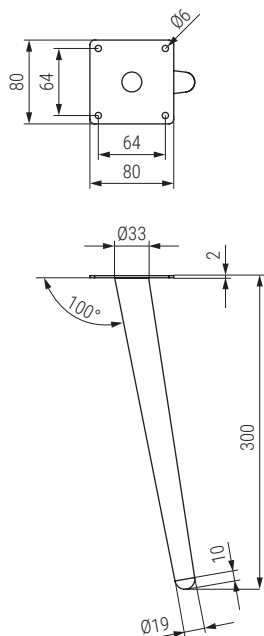
ONICE Pata metálica H300


Sofa leg

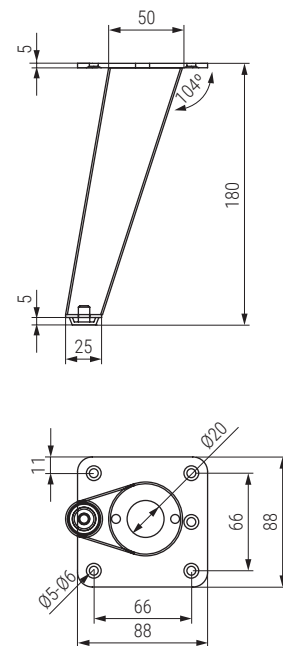


COV Pata metálica H180

Sofa leg



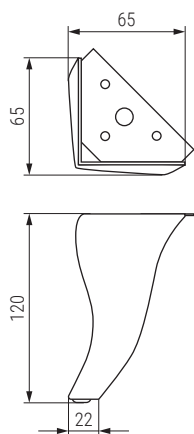
Código Code	Material	Acabado Finish	
9034.616	acero/steel	oro/gold	60



Código Code	Material	Acabado Finish	
1439.486	acero/steel	negro mate/black matt	40
1439.487	acero/steel	níquel oscuro/black chrome	40

ISELA Pata metálica H120

Sofa leg

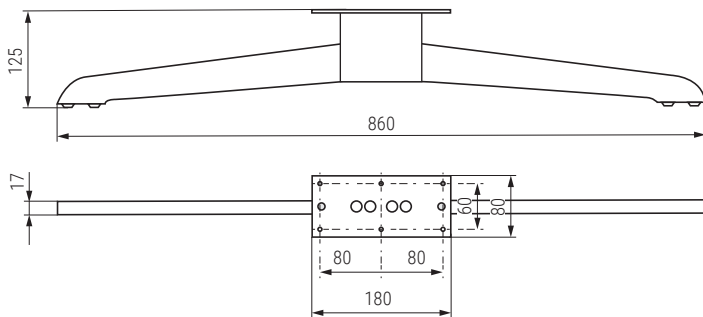



Código Code	Material	Acabado Finish	
9034.592	acero/steel	cromo/chrome	60
9034.604	acero/steel	negro mate/black matt	60



HELGA XL Pata metálica H125

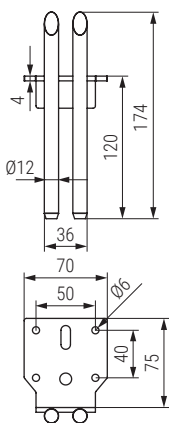
Sofa leg



Código Code	Material	Acabado Finish	
1439.129	acero/steel	cromo/chrome	5
1439.130	acero/steel	níquel oscuro/black chrome	5
1439.360	acero/steel	negro mate/black matt	5

TEN Pata metálica H120

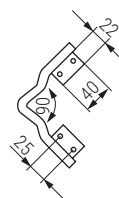
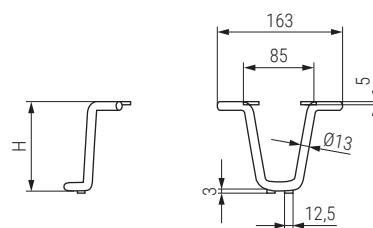
Sofa leg



Código Code	Material	Acabado Finish	
1439.430	acero/steel	negro mate/black matt	30

VERNICE Pata metálica H100 - H120

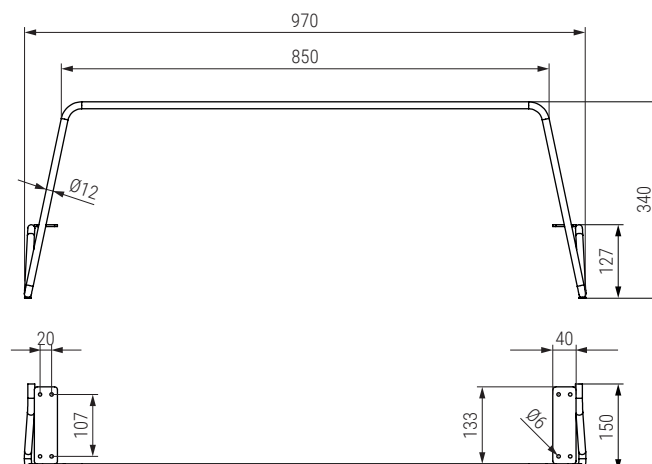
Sofa leg




Código Code	H	Material	Acabado Finish	
9034.736	100	acero/steel	negro mate/black matt	30
9034.737	120	acero/steel	negro mate/black matt	30

VERNICE XL Pata metálica H130 L970

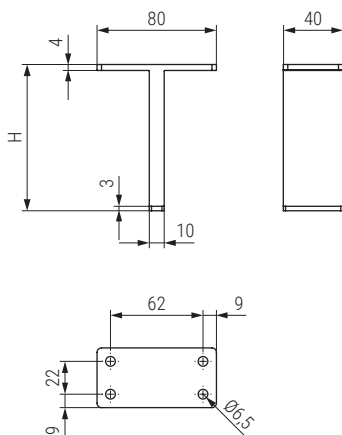
Sofa leg



- Otras medidas disponibles.
- Other sizes available.

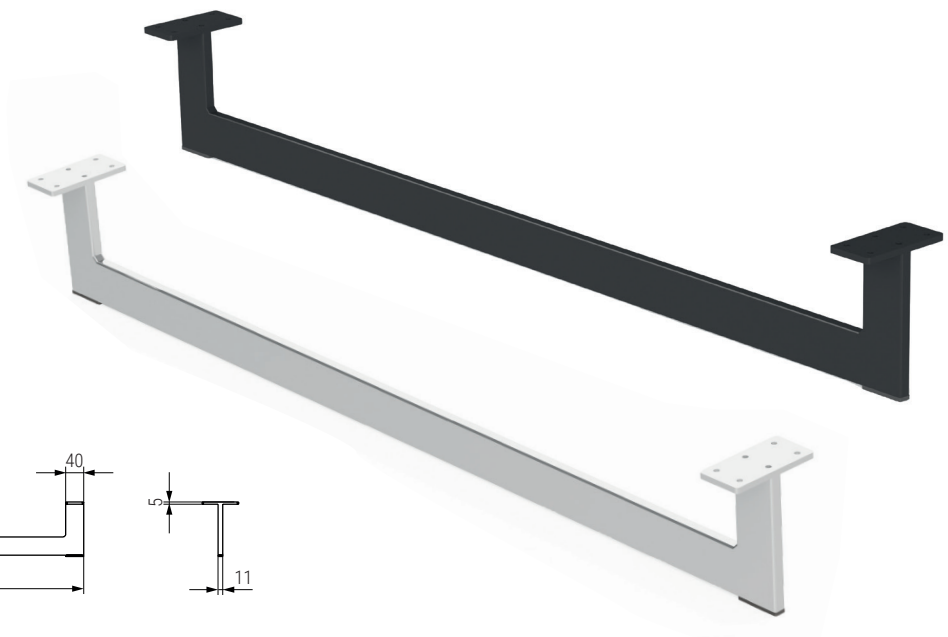
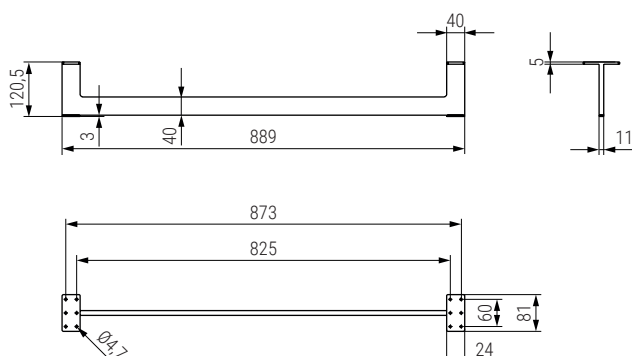
Código Code	Material	Acabado Finish	
9034.738	acero/steel	negro mate/black matt	1


TELLA Pata metálica H1100 - H120
Sofa leg



Código Code	H	Material	Acabado Finish	
9034.591	100	acero/steel	cromo/chrome	60
9034.599	120	acero/steel	cromo/chrome	60
9034.631	100	acero/steel	negro mate/black matt	60
9034.632	120	acero/steel	negro mate/black matt	60

TELLA XL Pata metálica H120
Sofa leg




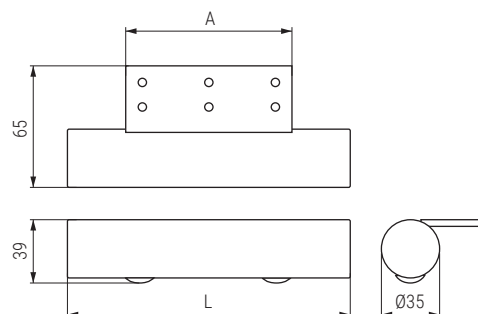
Código Code	Material	Acabado Finish	
1439.416	acero/steel	negro mate/black matt	10
1439.339	acero/steel	cromo/chrome	10

PASTRANA 35 Pata metálica Ø35 H40

Sofa leg




Código Code		L	A	Material	Acabado Finish	
Con placa	Sin placa					
9034.550	-	135	100	acero/steel	cromo/chrome	80
9034.554	-	165	100	acero/steel	cromo/chrome	80
9034.588	9034.589	220	100	acero/steel	cromo/chrome	80
9034.553	9034.595	280	150	acero/steel	cromo/chrome	50
9034.1026	-	220	100	acero/steel	negro mate/black matt	80
9034.1027	-	280	150	acero/steel	negro mate/black matt	50

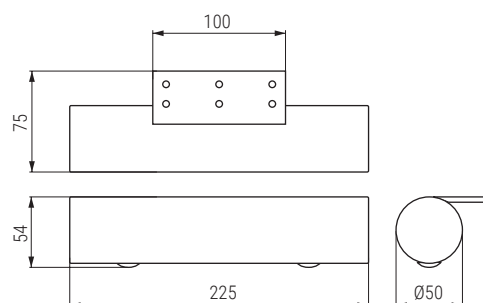


PASTRANA 50 Pata metálica Ø50 H54

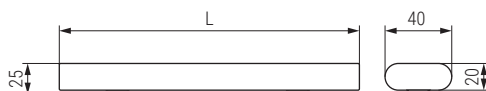
Sofa leg



Código Code	Material	Acabado Finish	
9034.552	hierro/steel	cromo/chrome	40

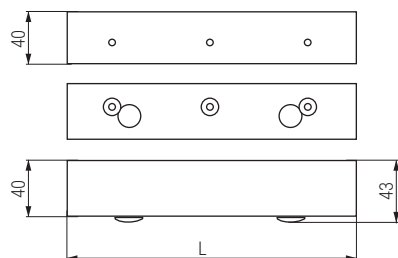
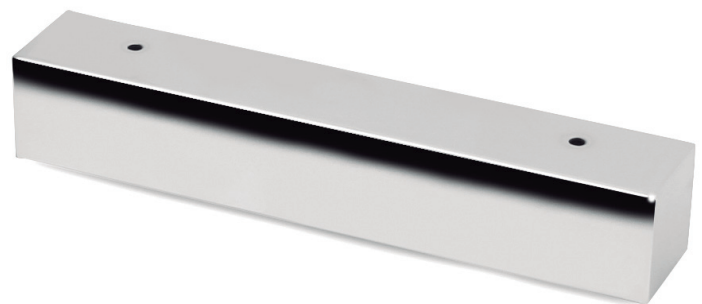


OVALEKO Pata metálica 20x40 H25
Sofa leg



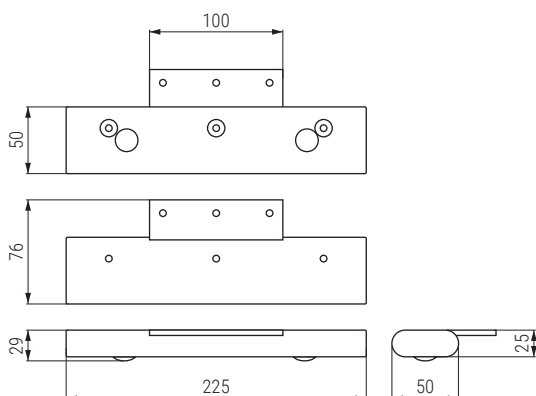
Código Code	L	Material	Acabado Finish	
9034.580	90	acero/steel	cromo/chrome	80
9034.607	150	acero/steel	cromo/chrome	80
9034.601	190	acero/steel	cromo/chrome	80
9034.603	220	acero/steel	cromo/chrome	80
9034.602	260	acero/steel	cromo/chrome	80

GALATEA Pata metálica Ø40 H43
Sofa leg



Código Code	L	Material	Acabado Finish	
1439.172	90	acero/steel	cromo/chrome	60
1439.334	170	acero/steel	cromo/chrome	40
1439.169	225	acero/steel	cromo/chrome	40
1439.170	280	acero/steel	cromo/chrome	40

ALBERO Pata metálica 25x50 H29
Sofa leg



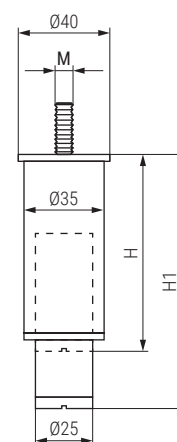
Código Code	Material	Acabado Finish	
9034.556	acero/steel	cromo/chrome	40

STORMY Pata metálica regulable

Adjustable sofa leg




Código Code	M	H	H1	Material	Acabado Finish	
1439.349	8	70	120	acero/steel	negro/black	80
1439.383	8	90	150	acero/steel	negro/black	80
1439.332	8	90	150	acero/steel	cromo RAL 9006/grey RAL	80
1439.341	8	120	180	acero/steel	negro mate/black matt	70
1439.481	10	90	150	acero/steel	negro mate/black matt	80
1439.482	10	120	180	acero/steel	negro mate/black matt	70

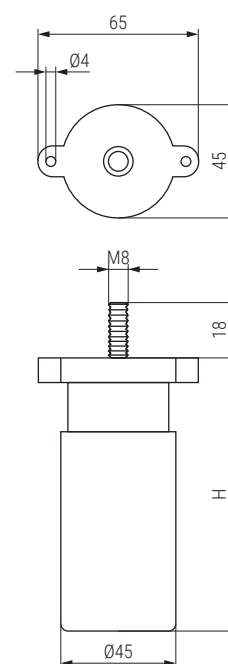


STORM Pata regulable

Adjustable sofa leg

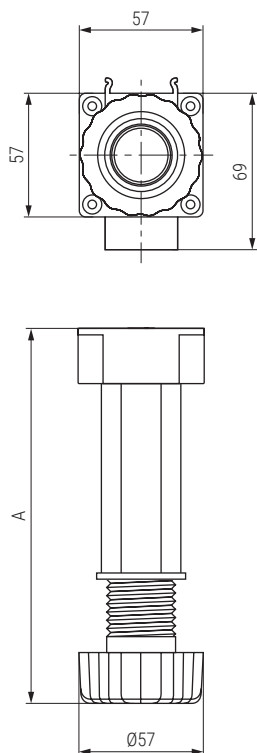


Código Code	H	Material	Acabado Finish	
720.25	95-145	plástico-ABS/plastic-ABS	negro/black	100
720.21	130-180	plástico-ABS/plastic-ABS	negro/black	100



OCTO ST Pata de cocina regulable octogonal sin tetón

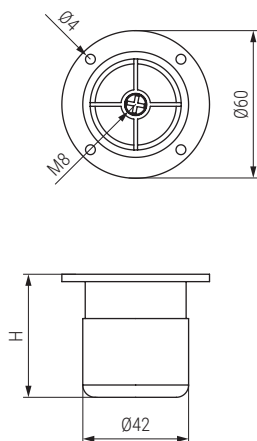
Adjustable sofa leg



Código Code	Mín	Máx	Material	Acabado Finish	
1070.1066	80	110	plástico/plastic	negro mate/black matt	4/200
1070.1067	100	140	plástico/plastic	negro mate/black matt	4/200
1070.1068	140	190	plástico/plastic	negro mate/black matt	4/200

SANDY Pie nivelador regulable

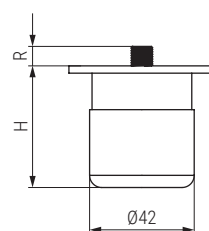
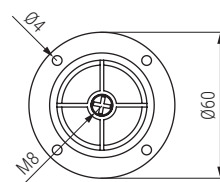
Adjustable sofa leg



Código Code	H	Material	Acabado Finish	
679.21	35-50	plástico/plastic	negro mate/black matt	200
679.22	45-70	plástico/plastic	negro mate/black matt	100
679.23	64-100	plástico/plastic	negro mate/black matt	100

SANDY M8 Pie nivelador regulable

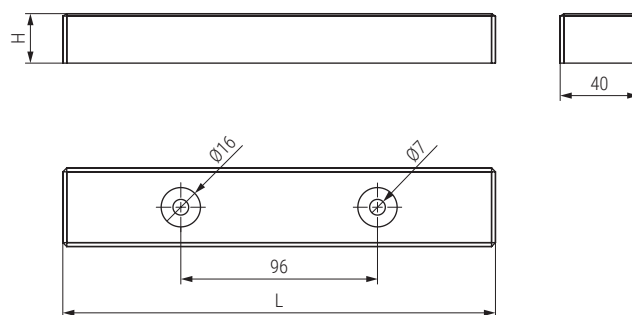
Adjustable sofa leg



Código Code	H	R	Material	Acabado Finish	
679.41	35-50	8	plástico/plastic	negro mate/black matt	200
679.42	45-70	16	plástico/plastic	negro mate/black matt	100
679.43	64-100	16	plástico/plastic	negro mate/black matt	100

TOZO Pata de madera H220 - H260

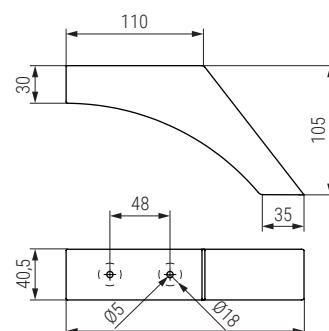
Sofa leg




Código Code	L	H	Material	Acabado Finish	
36.17	220	25	madera haya/beech wood	wengue/wengue	64
36.18	220	25	madera haya/beech wood	natural/natural	64
36.23	260	35	madera haya/beech wood	natural/natural	64

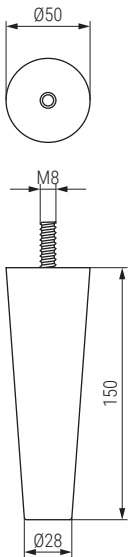
BOOMERANG Pata de madera H105

Sofa leg



Código Code	Material	Acabado Finish	
154.41	madera haya/beech wood	natural/natural	60

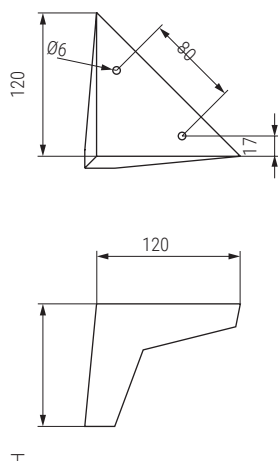
PALO Pata madera cónica H150
Sofa leg




Código Code	Material	Acabado Finish	
154.12	madera/wood	haya/beech	120
154.17	madera/wood	negro/black	120

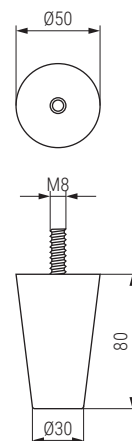



ELISEO Pata madera H100/130
Sofa leg



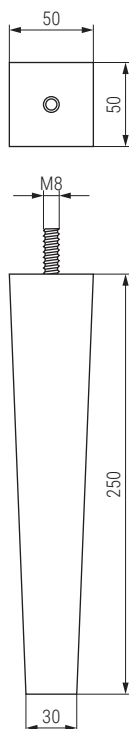
Código Code	H	Material	Acabado Finish	
154.46	100	madera/wood	roble/oak	50
154.47	130	madera/wood	roble/oak	40


PALO Pata madera cónica H80
Sofa leg



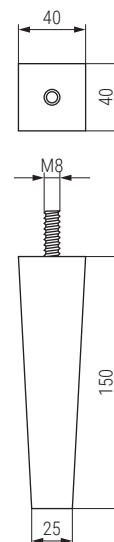
Código Code	Material	Acabado Finish	
154.10	madera/wood	haya/beech	200


PALO Pata madera cuadrada H250
Sofa leg



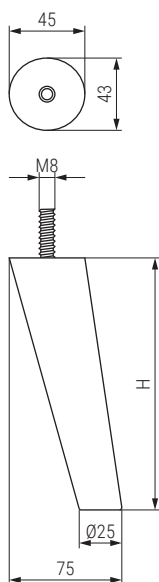
Código Code	Material	Acabado Finish	
154.5	madera/wood	haya/beech	80


PALO Pata madera cuadrada H150
Sofa leg



Código Code	Material	Acabado Finish	
154.4	madera/wood	haya/beech	180

PALO Pata madera inclinada H120 - H150
Sofa leg

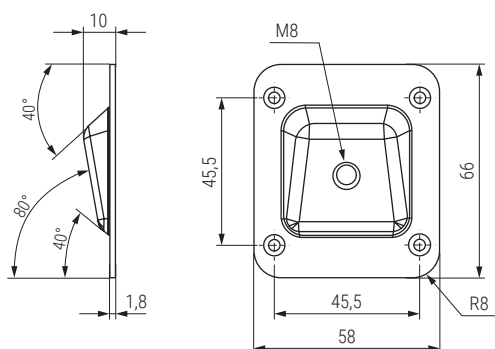



Código Code	H	Material	Acabado Finish	
154.21	120	madera/wood	haya/beech	100
154.26	120	madera/wood	negro/black	100
154.22	150	madera/wood	haya/beech	80
154.27	150	madera/wood	negro/black	80



KETAL Placa inclinada M8

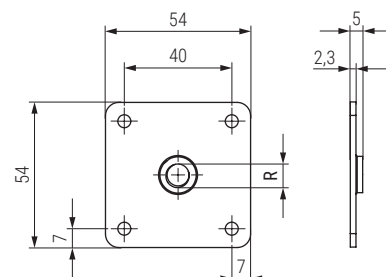
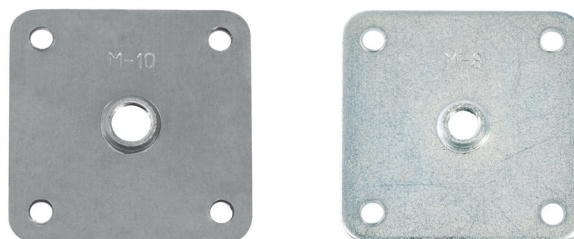
M8 Angle plate



Código Code	Material Material	Acabado Finish	
731.5	acero/steel	zincado/zinc	400

DATA Placa cuadrada para patas

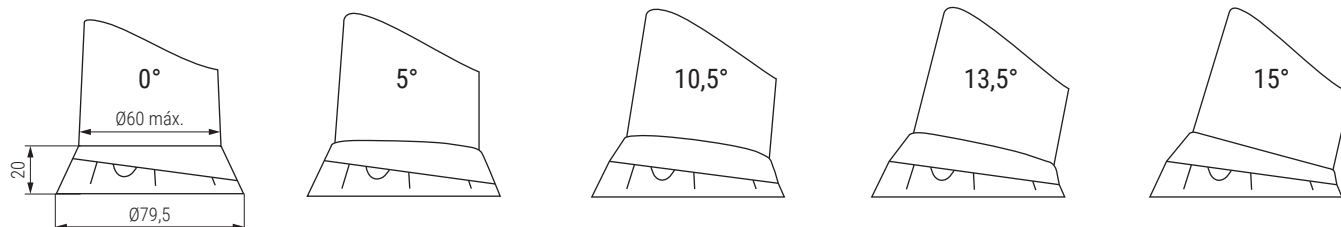
Square plate



Código Code	R	Material	Acabado Finish	
9030.219	M6	acero/steel	zincado/zinc	500
9030.165	M8	acero/steel	zincado/zinc	500
9030.164	M10	acero/steel	zincado/zinc	250
9030.93	M8	acero/steel	bruto/raw material	500
9030.107	M10	acero/steel	bruto/raw material	500

TWIST'N TURN Conector para patas ajustable M10.


Adjustable leg connector



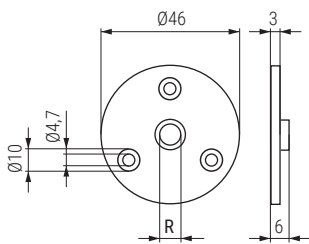
Video montaje
Video montage



Información técnica
Technical information

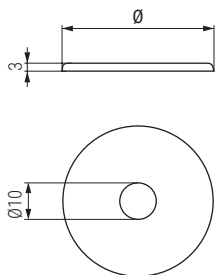
Código Code	Material	Acabado Finish	
731.4	plástico/plastic	negro/black	180

MATE 46 Placa redonda para patas
Round plate



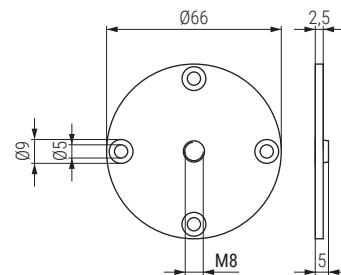
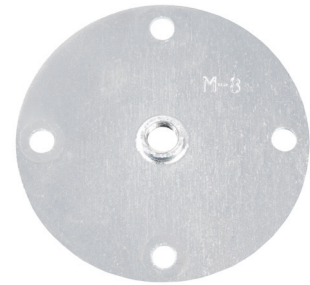
Código Code	R	Material	Acabado Finish	
9030.177	M8	acero/steel	zincado/zinc	500
9030.217	M10	acero/steel	zincado/zinc	500

TINA Arandelas para patas
Plastic washer



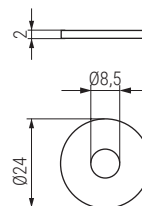
Código Code	Ø	Material	Acabado Finish	
9030.52	47	plástico/plastic	negro/black	1.000
9030.51	57	plástico/plastic	negro/black	1.000

MATE 66 Placa redonda para patas M8
Round plate M8



Código Code	Material	Acabado Finish	
9030.178	acero/steel	zincado/zinc	250

ARPLAS Arandela de plástico
Plastic washer

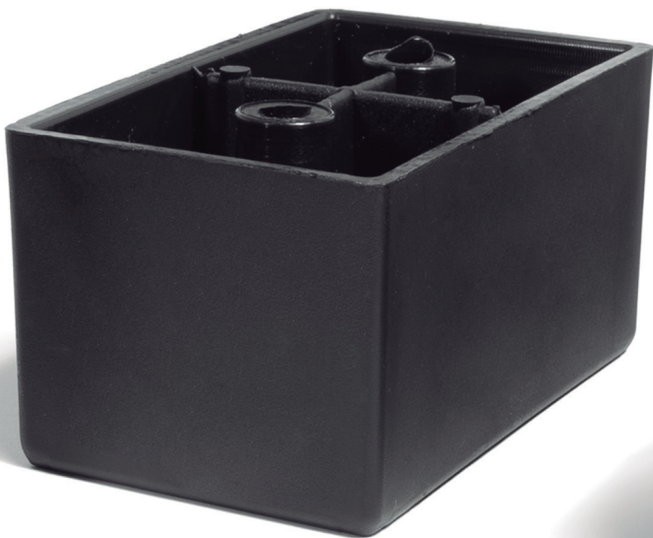


Código Code	Material	Acabado Finish	
2000.45	plástico/plastic	negro/black	5.000

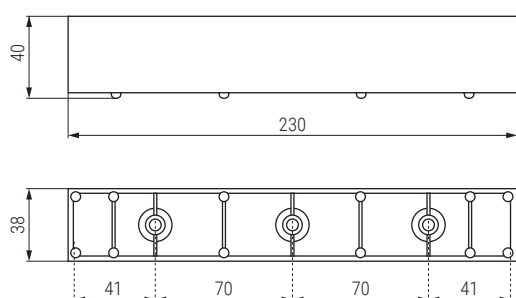
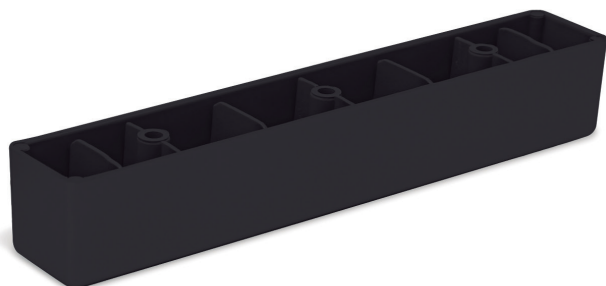
PLÁSTICO

PLASTIC



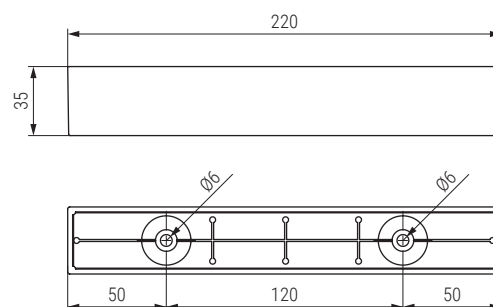


MAYA Pata plástico H40
Plastic sofa leg



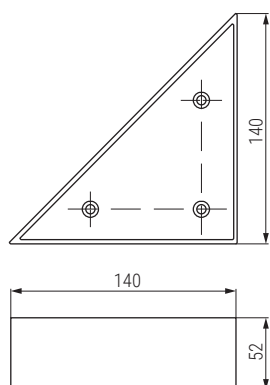
Código Code	Material	Acabado Finish	
597.73	plástico/plastic	negro/black	228

MAYA Pata plástico H35
Plastic sofa leg



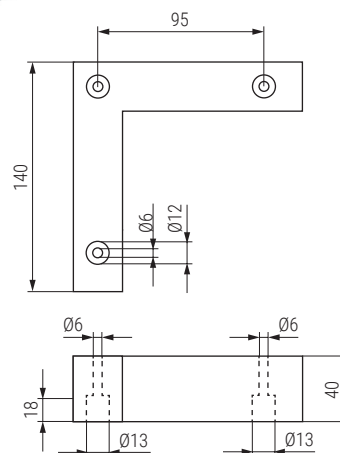
Código Code	Material	Acabado Finish	
317.21	plástico/plastic	haya/beech	1/275

SUKA Pata plástico H52
Plastic sofa leg



Código Code	Material	Acabado Finish	
597.55	plástico/plastic	negro/black	128

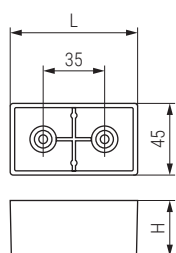
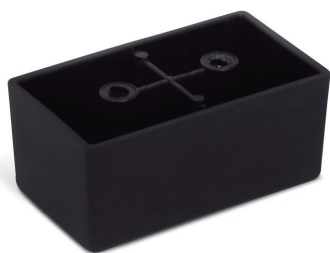
SENKA 140 Pata de plástico H40
Plastic sofa leg



Código Code	Material	Acabado Finish	
1037.42	plástico/plastic	negro/black	104

BLU Pata plástico H20-H35

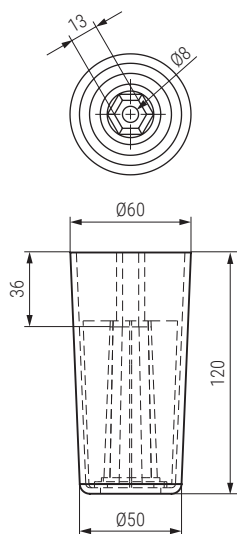
Plastic sofa leg



Código Code	H	L	Material	Acabado Finish	
317.27	20	60	plástico/plastic	negro/black	700
317.3	35	80	plástico/plastic	negro/black	330

ASTI Pata plástico H120

Plastic sofa leg

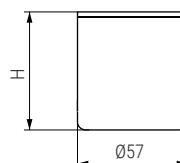
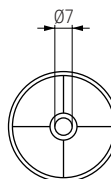


- Usar DIN 933 M8X50/60 (Salida rosca 14/24.). No incluido.
- Use DIN 933 M8X50/60. (Upper thread 14/24.) Not included.

Código Code	Material	Acabado Finish	
317.28	plástico/plastic	negro/black	170

ARON Pata plástico H70 - H97 - H105

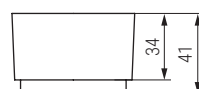
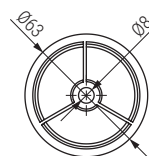
Plastic sofa leg



Código Code	H	Material	Acabado Finish	
317.11	70	plástico/plastic	negro/black	285
317.13	97	plástico/plastic	negro/black	180
317.12	105	plástico/plastic	negro/black	180

Suplemento para pata ASTI H30

Plastic supplement

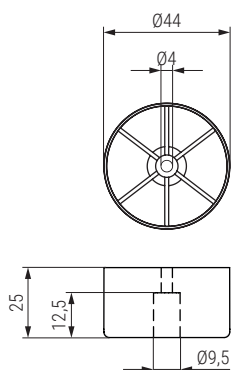


- Usar DIN 933 M8X80/90/100 (Salida rosca 10/20/30). No incluido.
- Use DIN 933 M8X80/90/100. (Upper thread 10/20/30). Not included.

Código Code	Material	Acabado Finish	
317.30	plástico/plastic	negro/black	500

TIKA Pata de plástico H25

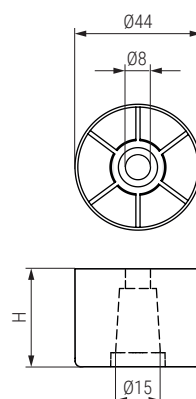
Plastic sofa leg



Código Code	Material	Acabado Finish	
1037.110	plástico/plastic	negro/black	1.000

TIKA Pata de plástico H35-40

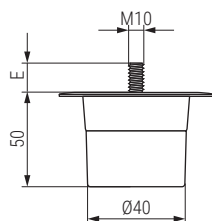
Plastic sofa leg



Código Code	H	Material	Acabado Finish	
1037.112	35	plástico/plastic	negro/black	500
1037.111	40	plástico/plastic	negro/black	500

SIMIO Pata plástico con esparrago H50

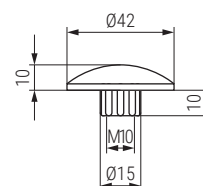
Plastic sofa leg with thread



Código Code	E	Material	Acabado Finish	
9030.64V	13	plástico/plastic	negro/black	120
9030.65	18,5	plástico/plastic	negro/black	120

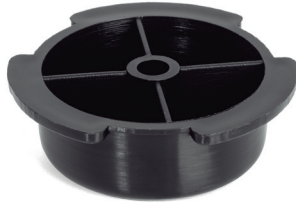
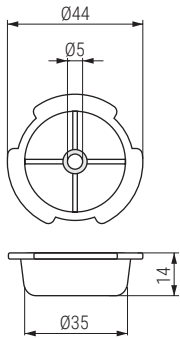
Tapón roscado para pata plástico SIMIO


Plastic tap



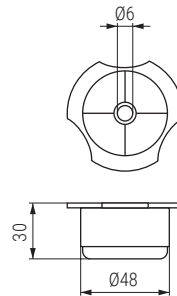
Código Code	Material	Acabado Finish	
9030.144	plástico/plastic	negro/black	1.000


PRIMATE 14 Pata plástico H14
Plastic sofa leg



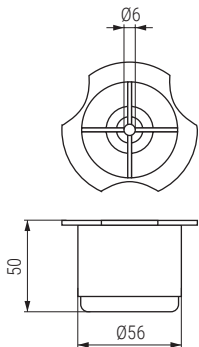
Código Code	Material	Acabado Finish	
9030.187	plástico/plastic	negro/black	3.000


PRIMA 30 Pata plástico H30
Plastic sofa leg



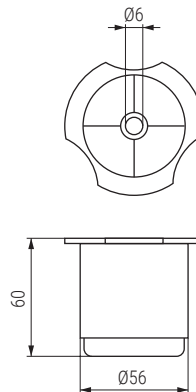
Código Code	Material	Acabado Finish	
9030.26	plástico/plastic	negro/black	900


PRIMA 50 Pata plástico H50
Plastic sofa leg



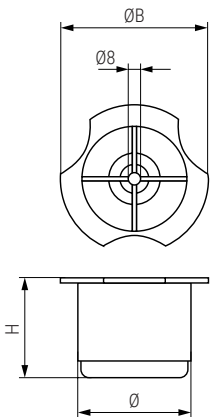
Código Code	Material	Acabado Finish	
9030.169	plástico/plastic	negro/black	400


PRIMA 60 Pata plástico H60
Plastic sofa leg



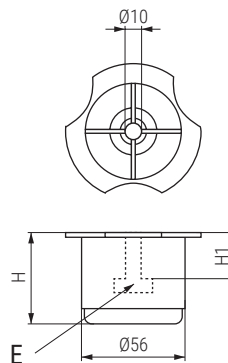
Código Code	Material	Acabado Finish	
9030.27	plástico/plastic	negro/black	325

ALON Pata plástico H30-35
Plastic sofa leg




Código Code	H	Ø	ØB	Material	Acabado Finish	
317.16	30	48	60	plástico/plastic	negro/black	850
317.17	35	60	71	plástico/plastic	negro/black	500

PRIMA 50/60TM10 Pata plástico para DIN 933
Plastic sofa leg

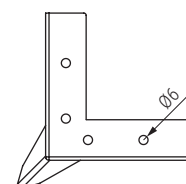
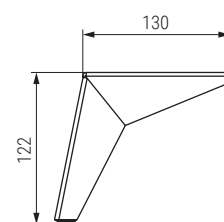


• Usar DIN 933 M10X50/60. No incluido.
• Use DIN 933 M10X50/60. Not included.

Código Code	H	H1	Material	Acabado Finish	
9030.176	50	25	plástico/plastic	negro/black	400
9030.175	60	30	plástico/plastic	negro/black	325

TOGO Patas de plástico H100 - H120

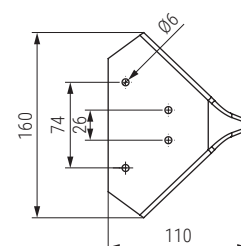
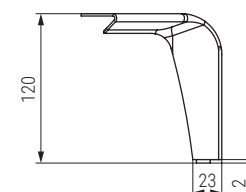
Plastic sofa leg




Código Code	H	Material	Acabado Finish	
317.33	120	plástico/plastic	blanco/white	110
317.36	100	plástico/plastic	madera/wood	110
317.34	120	plástico/plastic	madera/wood	110
317.35	100	plástico/plastic	negro mate/black matt	110
317.32	120	plástico/plastic	negro mate/black matt	110

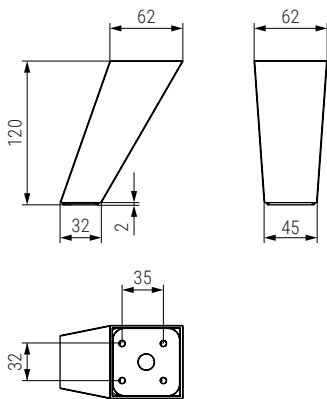
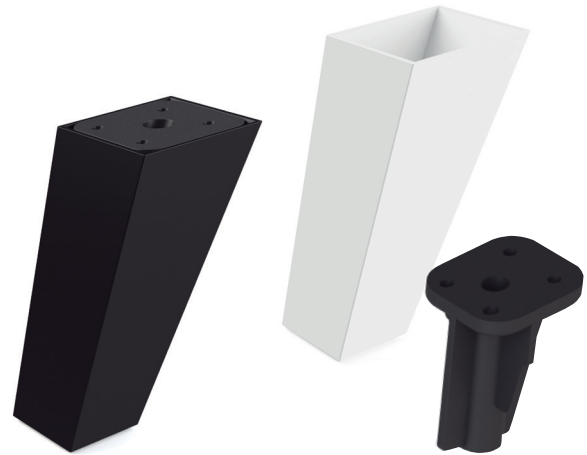
CLARK Patas de plástico H120

Plastic sofa leg



Código Code	H	Material	Acabado Finish	
317.43	120	plástico/plastic	blanco/white	110
317.42	120	plástico/plastic	negro mate/black matt	110

FASTER Pata de plástico H120
Plastic sofa leg

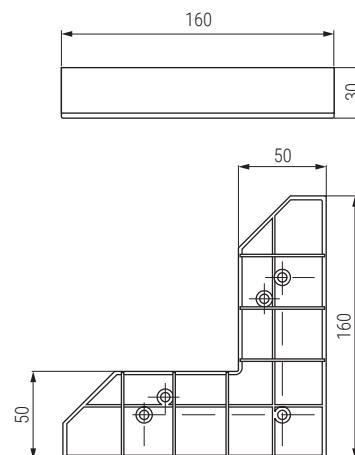
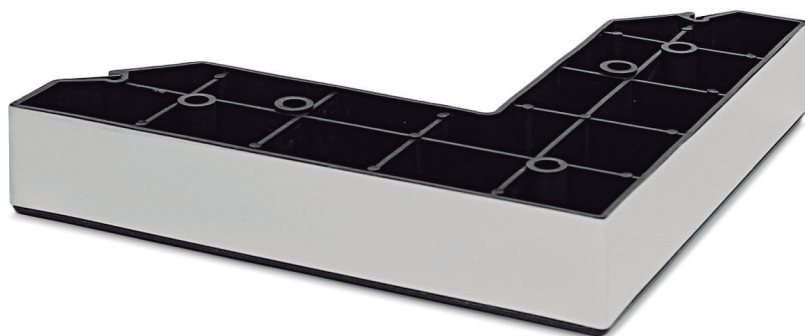


- La pata se divide en dos pieza.
- Two parts.

Código Code	Material	Acabado Finish	
720.41	ABS/ABS	blanco/white	100
720.42	ABS/ABS	negro/black	100

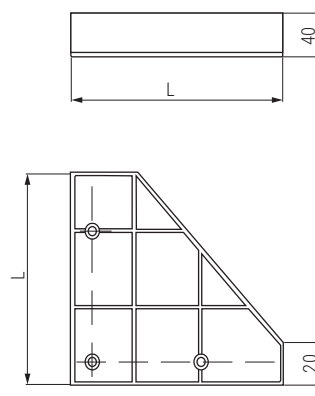
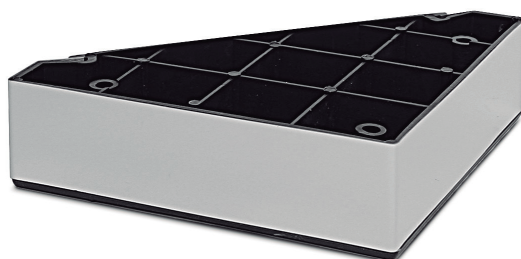



KIANA Pata de plástico con lámina de acero inox. H30
Plastic sofa leg with stainless steel sheet



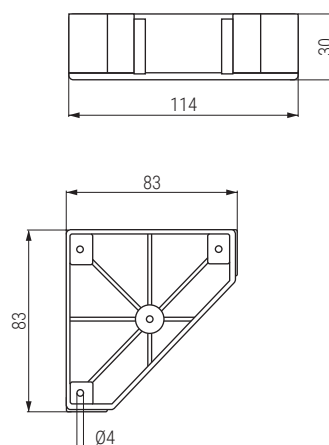
Código Code	Material	Acabado Finish	
1037.56	plástico-a.inox/plastic-stainless steel	a.inox/stainless steel	105


KADE Pata de plástico con lámina de acero inox. H40
Plastic sofa leg with stainless steel sheet



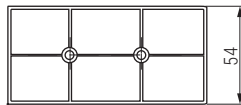
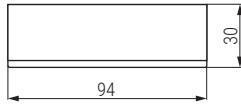
Código Code	L	Material	Acabado Finish	
1037.54	120	plástico-a.inox	a.inox/stainless steel	132
1037.55	140	plastic-stainless steel		99


ESQUINERA Pata de plástico con lámina de acero inox. H30
Plastic sofa leg with stainless steel sheet



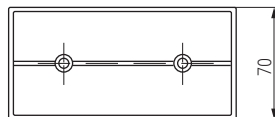
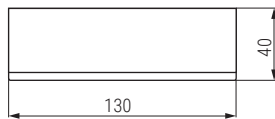
Código Code	Material	Acabado Finish	
1037.5	plástico-a.inox/plastic-stainless steel	a.inox/stainless steel	336


DUKA 30 Pata de plástico con lámina de acero inox H30
Plastic sofa leg with stainless steel sheet



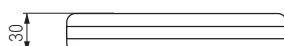
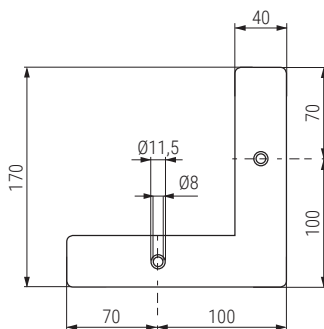
Código Code	Material	Acabado Finish	
1037.52	plástico-a.inox/plastic-stainless steel	a.inox/stainless steel	379


DUKA 40 Pata de plástico con lámina de acero inox H40
Plastic sofa leg with stainless steel sheet



Código Code	Material	Acabado Finish	
1037.53	plástico-a.inox/plastic-stainless steel	a.inox/stainless steel	120

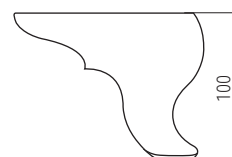
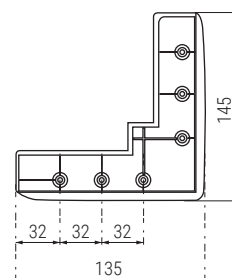
QUINA Pata plástico H30
Plastic sofa leg H30



Código Code	Material	Acabado Finish	
1037.89	plástico/plastic	a.inox/stainless steel	108

OKALIPTUS Patas de plástico H100

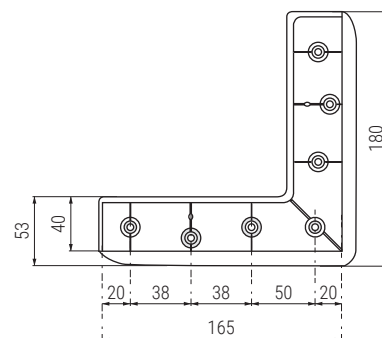
Plastic sofa leg



Código Code	Material	Acabado Finish	
1037.82	plástico/plastic	cromo RAL 9006/grey RAL	55
1037.83	plástico/plastic	negro/black	55
1037.312	plástico/plastic	cambrían/cambrian	55
1037.313	plástico/plastic	nogal/walnut	55
1037.314	plástico/plastic	blanco mate/white matt	55

OKALIPTUS Patas de plástico H140

Plastic sofa leg



Código Code	Material	Acabado Finish	
1037.64	plástico/plastic	blanco/white	32
1037.65	plástico/plastic	cromo RAL 9006/grey RAL	32
1037.84	plástico/plastic	negro/black	32

OKALIPTUS JOYA Patas de plástico H140
Plastic sofa leg

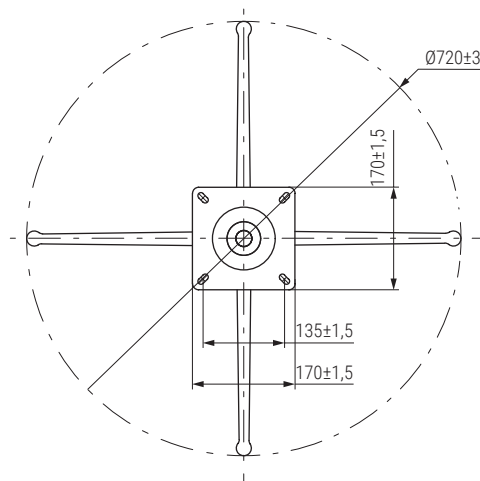
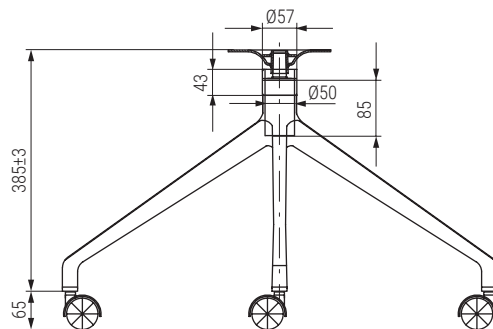


Código Code	Material	Acabado Finish	
1037.85	plástico/plastic	oro/gold	32
1037.86	plástico/plastic	perla/pearl	32
1037.87	plástico/plastic	blanco/white	32
1037.88	plástico/plastic	negro/black	32



MANTIS Pies giratorios para silla con base de 4 brazos H450

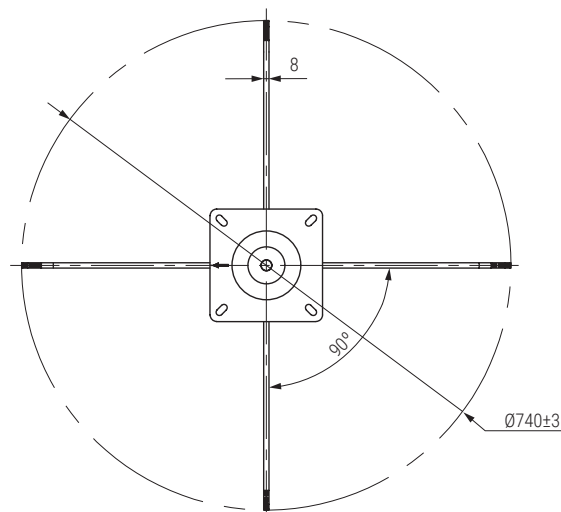
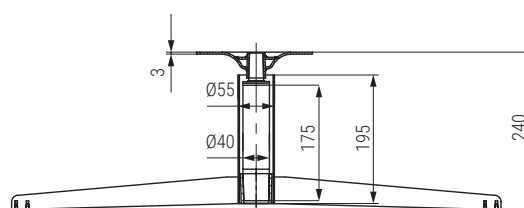
Swivel chair base




Código Code	Material	Acabado Finish	
94.11	acero/steel	negro mate/black matt	2

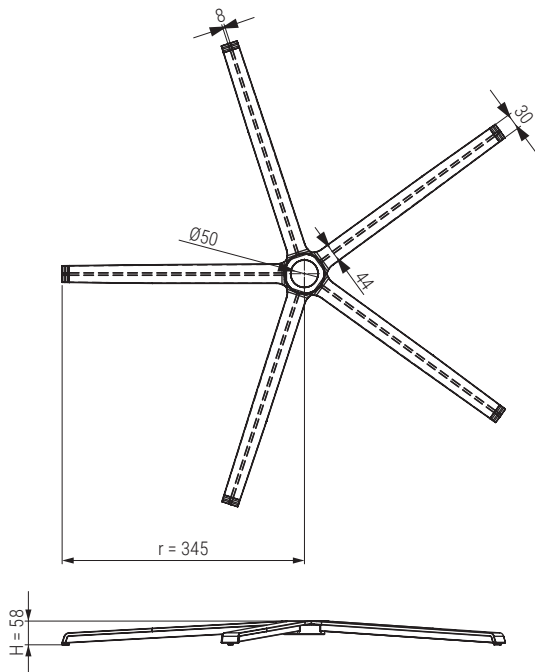
SPIDER Pies giratorios para sillones tapizados con base de 4 brazos H240

Swivel sofa base



Código Code	Material	Acabado Finish	
94.6	acero/steel	negro mate/black matt	2
94.7	acero/steel	níquel cepillado/brushed nickel	2

CONEY Pies giratorios para sillones tapizados con base de 5 brazos
Swivel sofa base

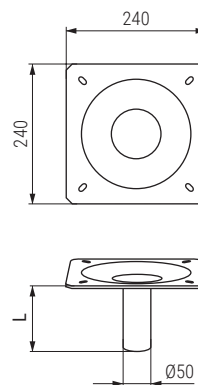


Código Code	Material	Acabado Finish	
1145.2	hierro/steel	negro mate/black matt	2
1145.3	hierro/steel	níquel cepillado/brushed nickel	2



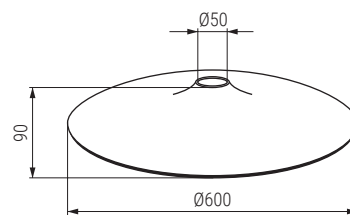
SPIDER


Columna con placa para base IZA
Column with plate for base



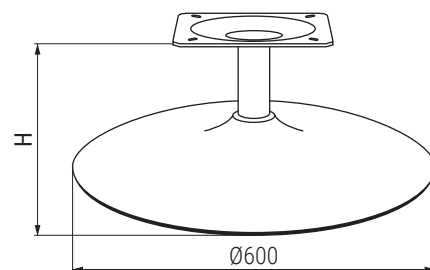
Código Code	H=altura del pie completo H=total height	L=altura columna L=column height	Material	Acabado Finish	
1216.5	235	185	acero/steel	cromo/chrome	5
1216.6	320	270	acero/steel	cromo/chrome	5

Base abombada Ø600 modelo IZA 600
Ø600 Conic base

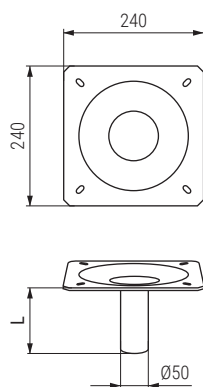


Código Code	Material	Acabado Finish	
1216.3	acero/steel	cromo/chrome	5

IZA 600 Pie giratorio para sillones tapizados con base cónica Ø600
Swivel sofa base Ø600

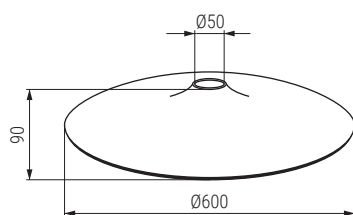



Columna con placa para base IZA
Column with plate for base



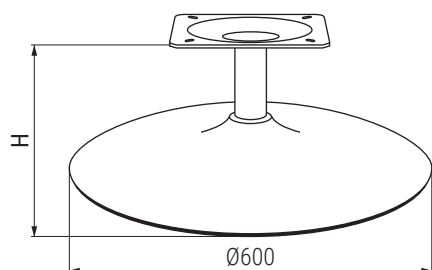
Código Code	H=altura del pie completo H=total height	L=altura columna L=column height	Material	Acabado Finish	
1216.19	235	185	acero/steel	negro mate/black matt	5
1216.21	320	270	acero/steel	negro mate/black matt	5

Base abombada Ø600 modelo IZA 600
Ø600 Conic base



Código Code	Material	Acabado Finish	
1216.18	acero/steel	negro mate/black matt	5

IZA 600 Pies giratorios para sillones tapizados con base cónica Ø600
Swivel sofa base Ø600



H120



H205



H325

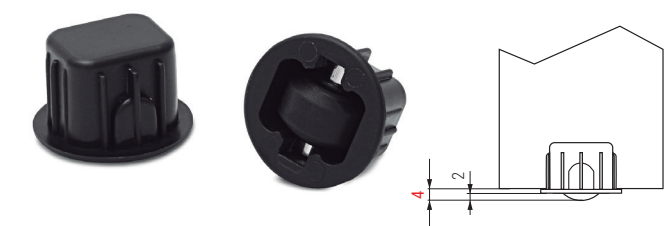
RUEDAS





CASSONE A-2 Base fija de embutir Ø26

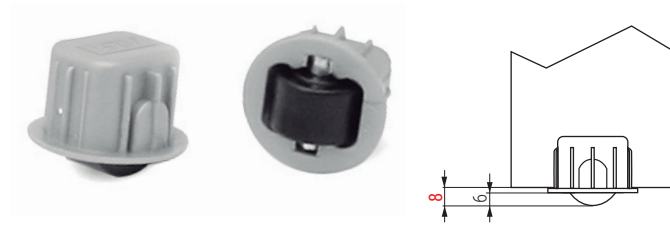
Embedded fixed castor



Código Code	Material	Acabado Finish	
597.11	poliuretano polyurethane	negro black	800

CASSONE A-6 Base fija de embutir Ø26

Embedded fixed castor



Código Code	Material	Acabado Finish	
597.12	poliamida-nílón polyamide-nylon	gris-negro grey-black	800

NEO Rodillo con placa

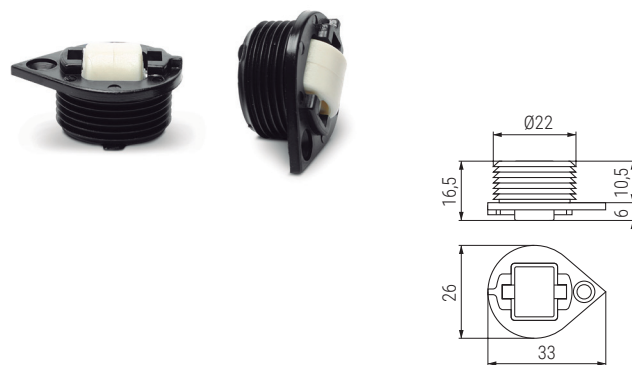
Embedded fixed castor



Código Code	Material	Acabado Finish	
1340.1	acero-plástico steel-plastic	zincado-negro zinc-black	1.000

ROLAN Base fija de embutir Ø22

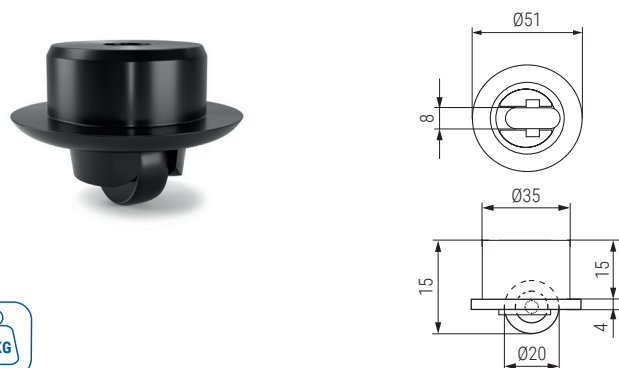
Embedded fixed castor



Código Code	Material	Acabado Finish	
970.25	plástico-nílón/plastic-nylon	negro-blanco/black-white	1.000

DOHA Base de embutir giratoria Ø35

Embedded swivel castor



Código Code	Material	Acabado Finish	
381.49	acero-plástico steel-plastic	negro black	200

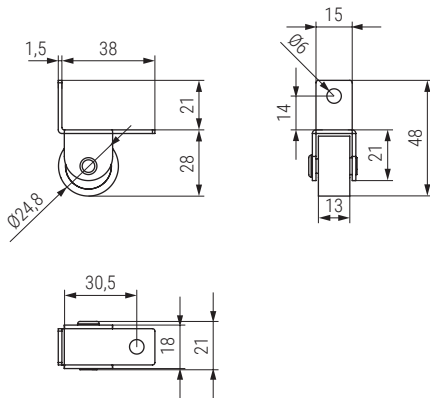
COMPO Esfera deslizante Ø32

Embedded swivel castor



Código Code	Material	Acabado Finish	
381.48	acero-plástico steel-plastic	níquel nickel	125

KETY-S Rueda fija con escuadra Ø25 H28
Fixed castor

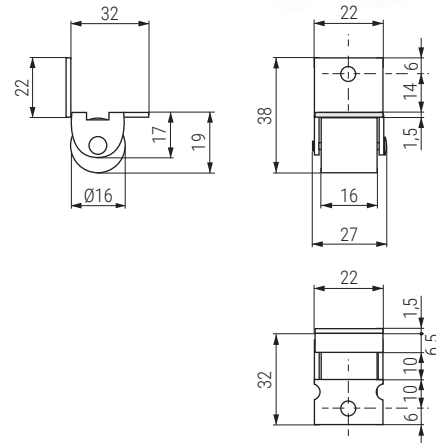


Banda rodadura de goma



Código Code	Material	Acabado Finish	
381.57	acero-plástico steel-plastic	níquel-gris nickel-grey	500

KETY Rueda fija con escuadra Ø16 H19
Fixed castor

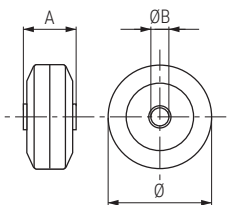


Código Code	Material	Acabado Finish	
1253.39	acero-plástico steel-plastic	zincado-negro zinc-black	500

GONDO Aro suelto de goma
Castor



Banda rodadura de goma

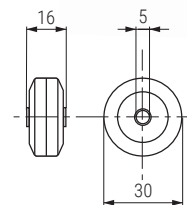


Código Code	Ø	A	ØB	Material	Acabado Finish	
675.38	25	13,5	4	goma rubber	gris grey	2.800
675.66	50	15	8,5	goma rubber	gris grey	1.000
675.74	50	13	6	goma rubber	gris grey	1.000

RONDO Aro suelto de goma Ø30
Castor



Banda rodadura de goma



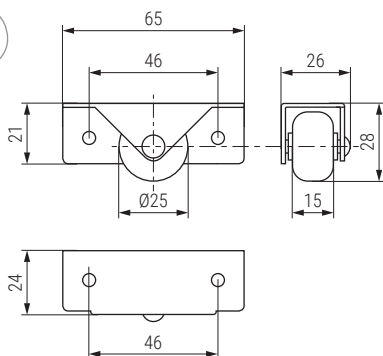
Código Code	Material	Acabado Finish	
675.93	goma rubber	gris-negro grey-black	1.000

NORIA Rueda fija lateral Ø25 H28

Lateral fixed castor



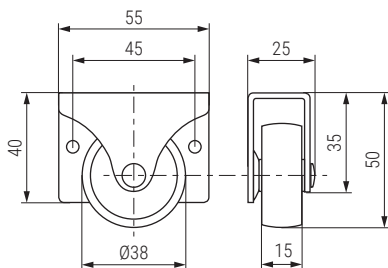
Banda rodadura
de goma



Código Code	Carga máxima Loading capacity	Material	Acabado Finish	
1253.7	35kg.	acero-goma steel-rubber	zincado-negro zinc-black	250

IPAD Rueda fija lateral Ø38 H50

Lateral fixed castor



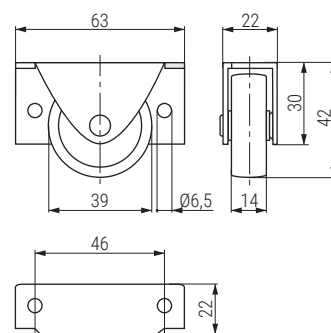
Código Code	Carga máxima Loading capacity	Material	Acabado Finish	
381.36	35kg.	acero-polipropileno steel-polypropylene	galvanizado-blanco galvanized-white	200

ORIANA Rueda fija lateral Ø39 H42

Lateral fixed castor



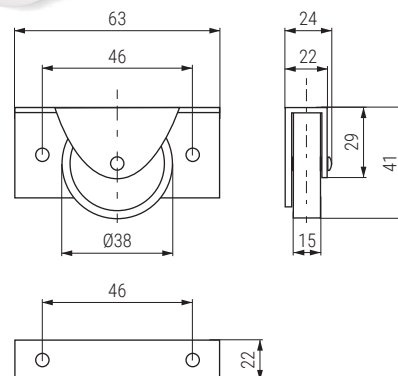
Banda rodadura
de poliuretano



Código Code	Carga máxima Loading capacity	Material	Acabado Finish	
1253.28	30kg.	acero-poliuretano steel-polyurethane	zincado-gris zinc-grey	200

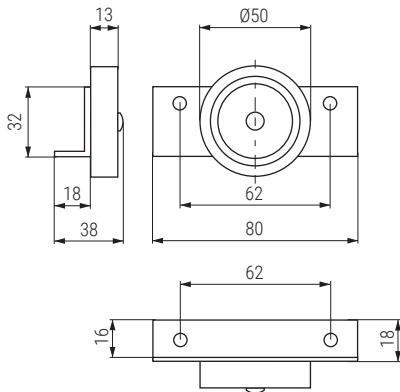
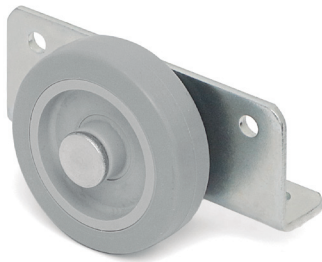
PADI Rueda fija lateral Ø38 H41

Lateral fixed castor



Código Code	Carga máxima Loading capacity	Material	Acabado Finish	
381.35	20kg.	acero-polipropileno steel-polypropylene	galvanizado-blanco galvanized-white	200

GORI Rueda fija lateral con soporte angular Ø50
Lateral fixed castor

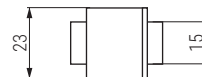
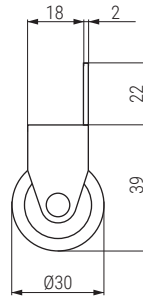


Banda rodadura de goma



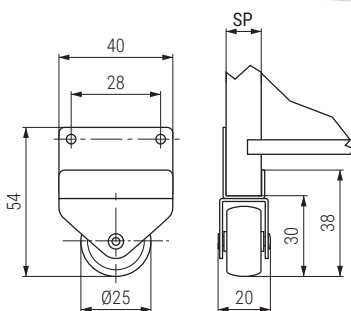
Código Code	Material	Acabado Finish	
675.211	acero-goma steel-rubber	zincado-gris zinc-grey	100

TAKUA Rueda fija lateral con escuadra Ø30 H39
Lateral fixed castor



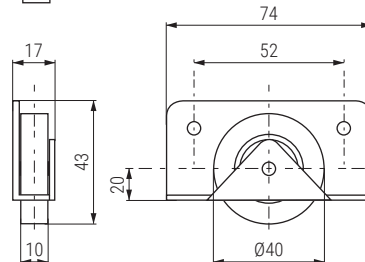
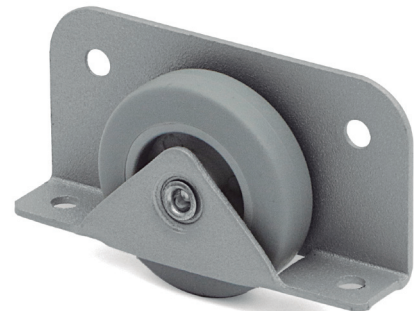
Código Code	Material	Acabado Finish	
1340.237	acero-plástico steel-plastic	zincado-negro zinc-black	400

RUNI Rueda con soporte para nidos Ø25 H30
Fixed castor



Código Code	SP	Material	Acabado Finish	
1333.10	12	acero-plástico steel-plastic	zincado-negro zinc-black	400
1333.110	20	acero-plástico steel-plastic	zincado-negro zinc-black	400

KIOTO Rueda para camas nido Ø40.
Fixed castor



Banda rodadura de goma



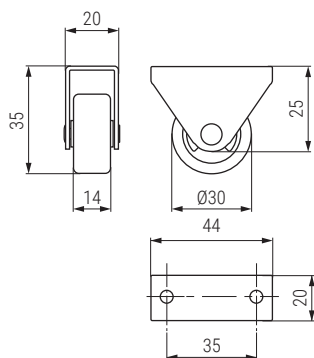
Código Code	Material	Acabado Finish	
675.121	acero-nílón steel-nylon	aluminio RAL 9006 aluminum grey RAL	200

AZURA Rueda fija para nido Ø30 H35

Fixed castor



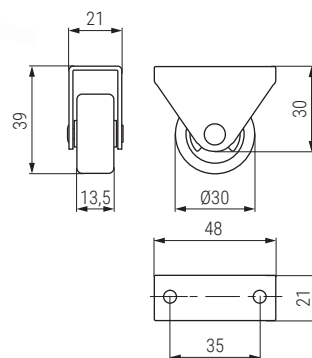
Banda rodadura de poliuretano



Código Code	Material	Acabado Finish	
1253.27	acero-poliuretano steel-polyurethane	zincado-gris zinc-grey	500

AARON Rueda fija para nido Ø30 H39

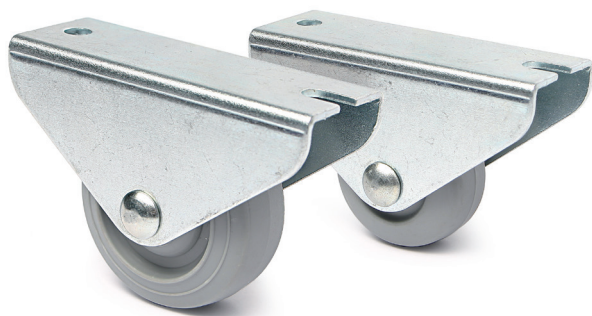
Fixed castor



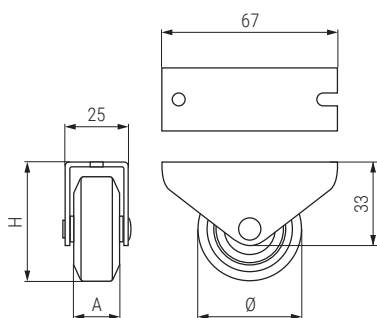
Código Code	Material	Acabado Finish	
1253.21	acero-nílón steel-nylon	zincado-negro zinc-black	400

NIDUS Rueda fija para nido Ø30/40

Fixed castor



Banda rodadura de goma



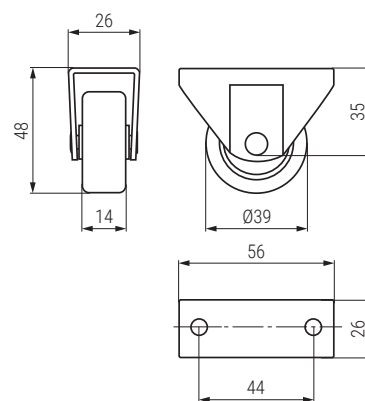
Código Code	Ø	H	A	Material	Acabado Finish	
675.59	30	42	16	acero-goma steel-rubber	zincado-gris zinc-grey	250
675.65	40	47	17	acero-goma steel-rubber	zincado-gris zinc-grey	250

TRUMAN Rueda fija para nido Ø39 H48

Fixed castor

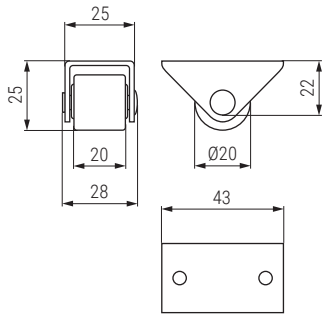


Banda rodadura de poliuretano



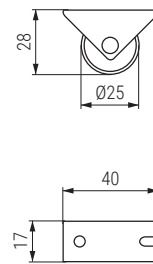
Código Code	Material	Acabado Finish	
1253.26	acero-poliuretano steel-polyurethane	zincado-gris zinc-grey	250

RIAZA Rueda fija para nido Ø20 H25
Fixed castor



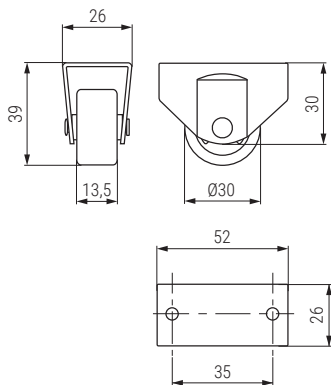
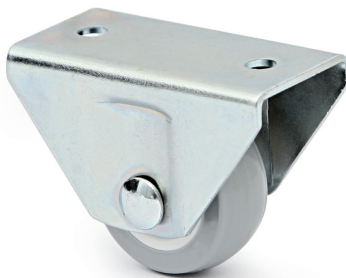
Código Code	Material	Acabado Finish	
675.69	acero-poliuretano steel-polyurethane	galvanizado-gris galvanized-grey	500

CICLO 25 Rueda fija para nido Ø25 H28
Fixed castor



Código Code	Material	Acabado Finish	
1253.2	acero-plástico steel-plastic	zincado-negro zinc-black	1.000

OLIVER Rueda fija para nidos Ø30 H39
Fixed castor

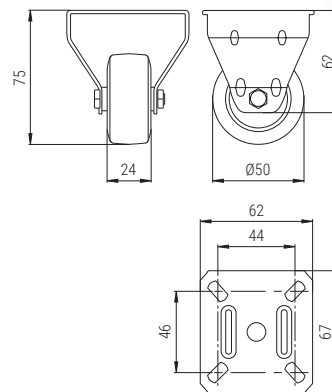
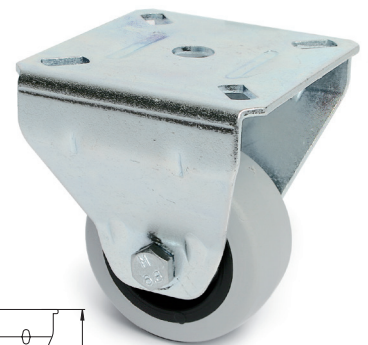


Banda rodadura
de poliuretano



Código Code	Material	Acabado Finish	
1253.25	acero-poliuretano steel-polyurethane	zincado-gris zinc-grey	250

ZAGA Rueda fija Ø50 H74
Fixed castor

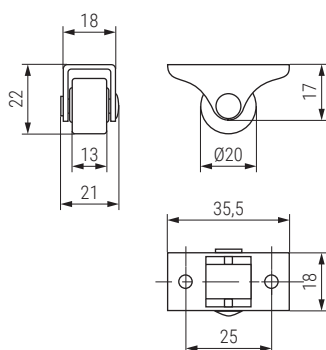


Banda rodadura
de goma



Código Code	Material	Acabado Finish	
1340.176	acero-goma steel-rubber	zincado-gris zinc-grey	100

DEVON Rueda fija pequeña Ø20 H22
Fixed castor

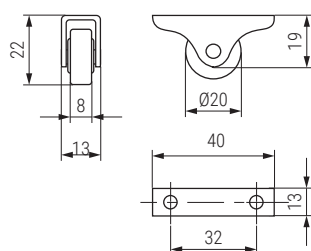


Código Code	Material	Acabado Finish	
1253.22	acero-nílón steel-nylon	zincado-negro zinc-black	1.000

ORION Rueda fija especial, muy estrecha Ø20 H22
Especial fixed castor



Banda rodadura
de poliuretano

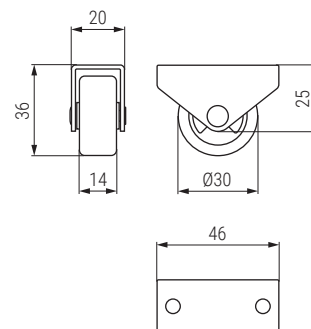


Código Code	Material	Acabado Finish	
1253.23	acero-poliuretano steel-polyurethane	zincado-negro zinc-black	1.000

NIPEX Rueda fija para nido Ø30 H36
Fixed castor

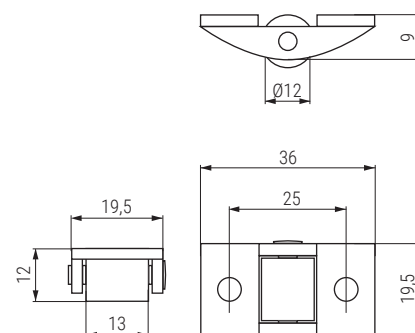


Banda rodadura
de poliuretano



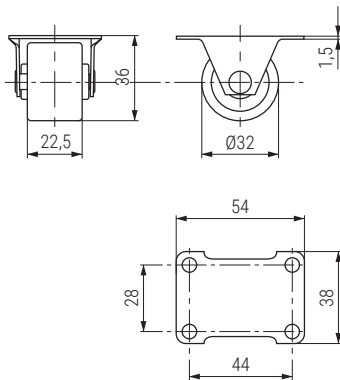
Código Code	Material	Acabado Finish	
701.10	acero-poliuretano steel-polyurethane	zincado-gris zinc-grey	600

MINIMA Rueda fija mini Ø12 H12
Fixed castor



Código Code	Material	Acabado Finish	
1253.30	plástico ABS ABS plastic	negro black	1.000

ZIAKO Rueda fija Ø32 H36
Fixed castor

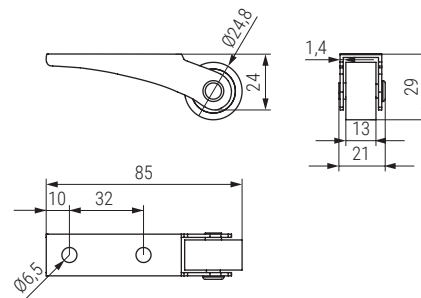


Código Code	Material	Acabado Finish	
1367.10	acero-plástico steel-plastic	zincado-negro zinc-black	400

NIPEX Rueda fija para nido Ø30 H36
Fixed castor

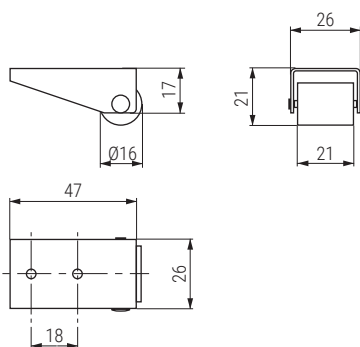


Banda rodadura
de goma



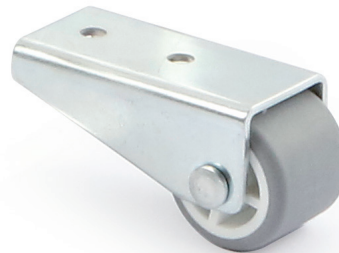
Código Code	Material	Acabado Finish	
381.56	acero-plástico steel-plastic	zincado-gris zinc-grey	400

UNAI Rueda fija Ø16mm. H21
Fixed castor

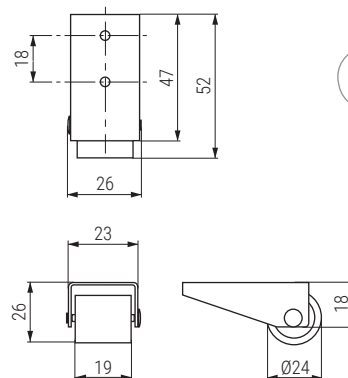


Código Code	Material	Acabado Finish	
1253.29	acero-nílón steel-nylon	zincado-negro zinc-black	500

ANUI Rueda fija Ø24mm. H26mm.
Fixed castor

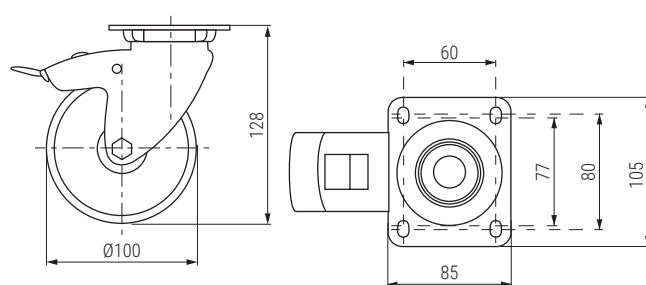
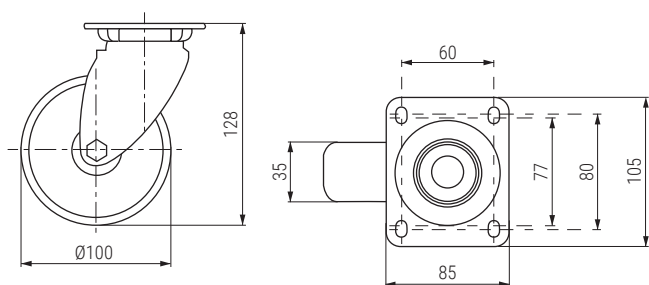


Banda rodadura
de goma




Código Code	Material	Acabado Finish	
1253.38	acero-goma steel-rubber	zincado-gris zinc-grey	400

ALPHA PL Rueda giratoria con placa. Aro de nilón resistente Ø100 H128
Swivel castor with plate. Resistant nylon material



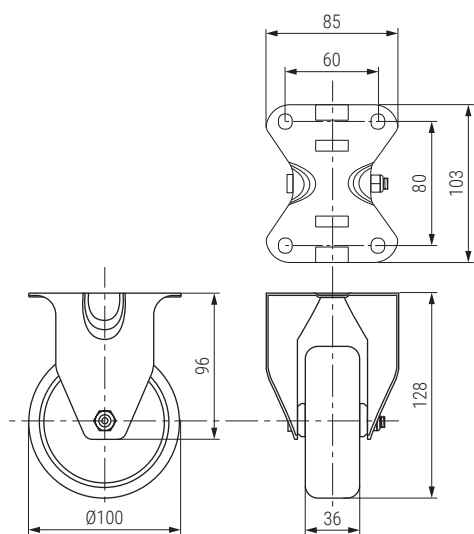
•Norma/standar EN 12530.

Código/Code		Ø	Antihilo Anti-thread	Carga máxima Loading capacity	Carga estática Static loading capacity	Material	Acabado Finish	
Sin freno No brake	Con freno With brake							
225.8	225.28	100	no	100kg.	200kg.	acero-nilón/steel-nylon	zincado/zinc	25
225.7	225.27	100	si	100kg.	200kg.	acero-nilón/steel-nylon	zincado/zinc	25



Ficha técnica
Data sheet

ALPHA FIJA Rueda fija con placa. Aro de nilón resistente Ø100 H128
Fixed castor with plate. Resistant nylon material



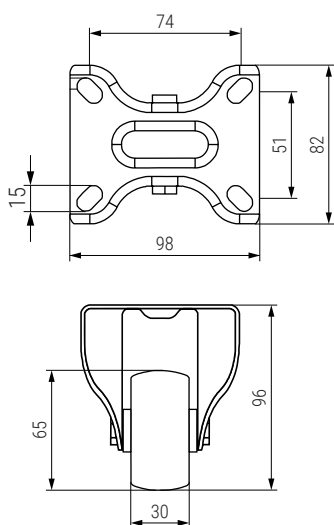
•Norma/standard EN 12530.




Ficha técnica
Data sheet

Código Code	Carga máxima Loading capacity	Carga estática Static loading capacity	Material	Acabado Finish	
1340.23	150kg.	300kg.	acero-nilón steel-nylon	zincado-blanco zinc-white	25

NALON FIJA Rueda fija con placa. Aro de nilón resistente Ø65 H96
Fixed castor with plate. Resistant nylon material



Ficha técnica
Data sheet

Código Code	Carga máxima Loading capacity	Material	Acabado Finish	
381.20	60kg.	acero-nilón steel-nylon	zincado-blanco zinc-white	20

JADE PLUS TP10 FR Rueda giratoria con taladro pasante


Swivel castor with through-hole drill

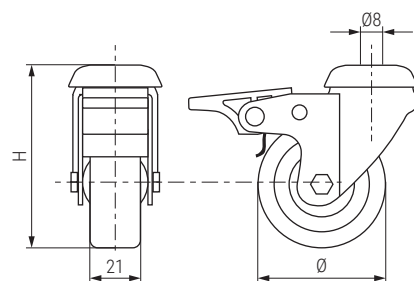


Banda rodadura de goma



- Aros de goma gris con placas laterales antihilos.
- Grey rubber ring

Código Code		Ø	H	Carga máxima Loading capacity	Acabado/Finish			
Sin freno	Con freno				Soporte Support	Banda Band	Placa Plate	
1340.95	1340.97	60	85	50kg.	zincado/zinc	gris/grey	zincado/zinc	80/60
1340.50	1340.51	80	105	65kg.	zincado/zinc	gris/grey	zincado/zinc	70/50
1340.96	1340.98	100	122	75kg.	zincado/zinc	gris/grey	zincado/zinc	50/36



JADE PLUS PL FR Rueda giratoria con placa


Swivel castor with plate

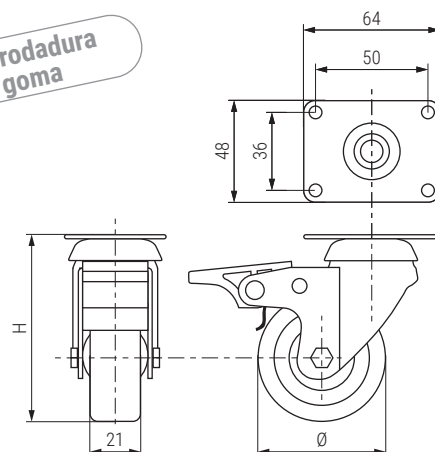


Banda rodadura de goma

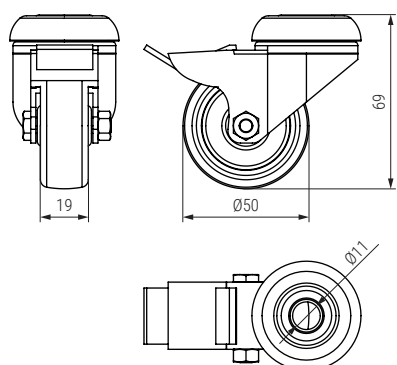


- Aros de goma gris con placas laterales antihilos.
- Grey rubber ring

Código Code		Ø	H	Carga máxima Loading capacity	Acabado/Finish			
Sin freno	Con freno				Soporte Support	Banda Band	Placa Plate	
1340.11	1340.10	60	86	50kg.	zincado/zinc	gris/grey	zincado/zinc	70/60
1340.4	1340.5	80	105	65kg.	zincado/zinc	gris/grey	zincado/zinc	70/60
1340.7	1340.6	100	124	75kg.	zincado/zinc	gris/grey	zincado/zinc	50/40



CROSS TP Rueda giratoria con taladro pasante Swivel castor with through-hole drill



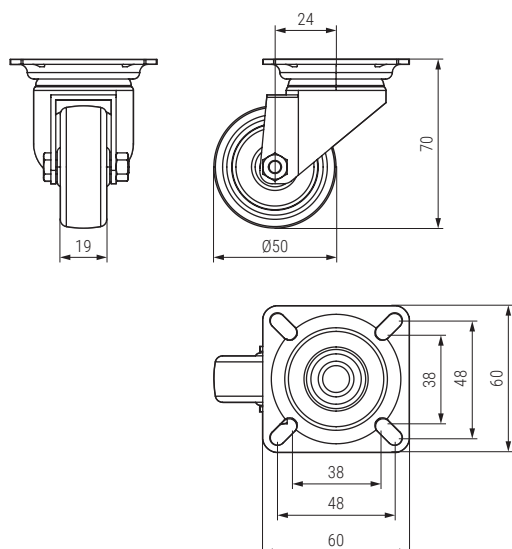
Banda rodadura
de goma



- Aros de goma gris oscuro
- Dark grey rubber ring

Código Code		Carga máxima Loading capacity	Carga estática Static loading capacity	Material	Acabado Finish	
Sin freno	Con freno					
1360.113	1360.114	40kg.	80kg.	acero-goma steel-rubber	zincado-gris zinc-grey	100

CROSS PL Rueda giratoria con placa Ø50 H70 Swivel castor with plate



Banda rodadura
de goma



- Aros de goma gris oscuro
- Dark grey rubber ring

Código Code		Carga máxima Loading capacity	Carga estática Static loading capacity	Material	Acabado Finish	
Sin freno	Con freno					
1360.111	1360.112	40kg.	80kg.	acero-goma steel-rubber	zincado-gris zinc-grey	100/90

LINEA LIGHT Rueda giratoria aro doble negro Ø50

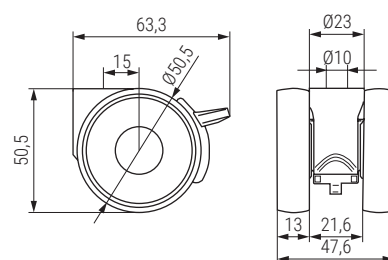
Swivel castor



Banda rodadura de poliuretano



Código Code		Carga máxima Loading capacity	Carga estática Static loading capacity	Material	Acabado	
Sin freno No brake	Con freno With brake				Finish	
1360.151	1360.152	50kg.	100kg.		plástico-poliuretano plastic-polyurethane	
					50	

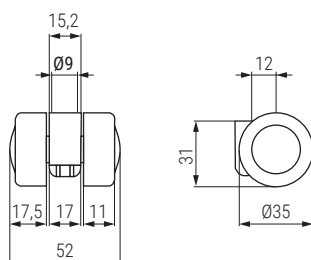


STYLEA LOW Rueda giratoria doble Ø35

Swivel castor



Hoja técnica
Data sheet



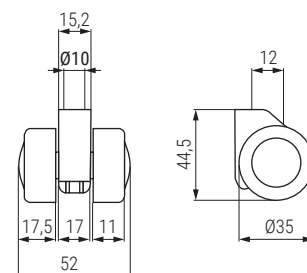
Código Code	Carga máx. Loading capacity	Carga estática Static loading capacity	Material	Acabado Finish	
1360.72	50kg.	100kg.	polyamide	negro/black	150

STYLEA HIGH Rueda giratoria doble Ø35

Swivel castor



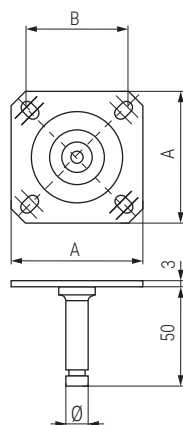
Hoja técnica
Data sheet



Código Code	Carga máx. Loading capacity	Carga estática Static loading capacity	Material	Acabado Finish	
1360.71	50kg.	100kg.	polyamide	negro/black	150

Placa cuadrada para ruedas

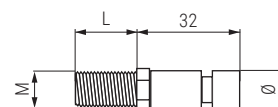
Square plate for castor



Código Code	Ø	A	B	Material	Acabado Finish	
1360.90	9	38	27	acero/steel	zincado/zinc	40
1360.91	10	42	32	acero/steel	zincado/zinc	40

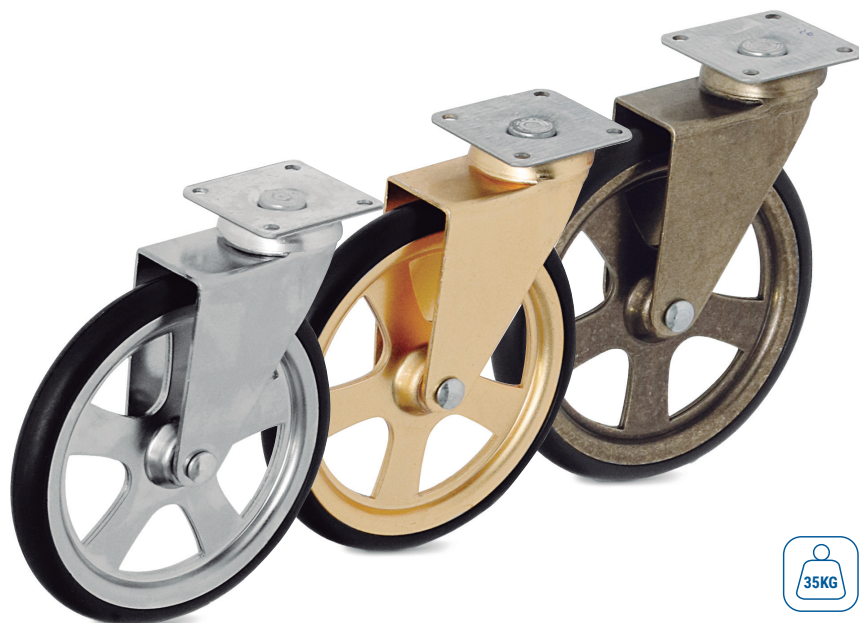
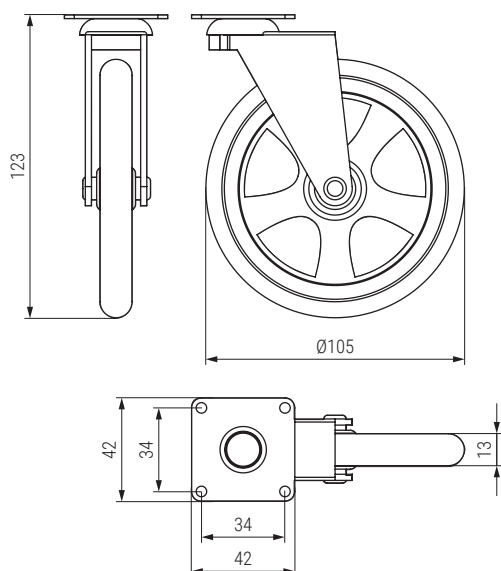
Espiga roscada


Threaded pin



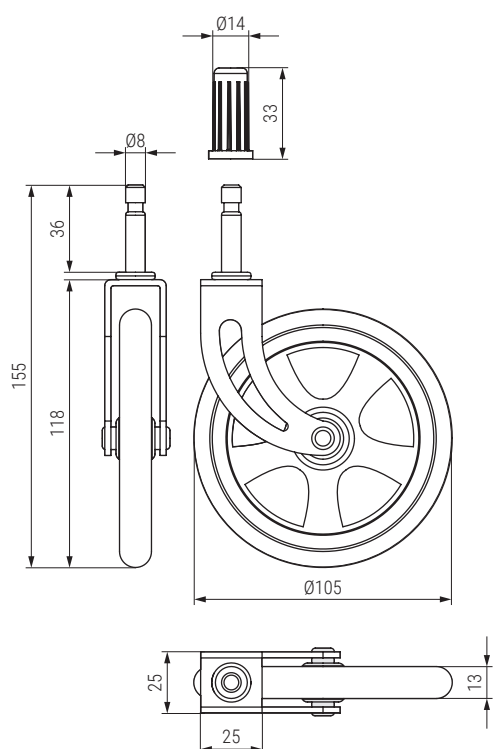
Código Code	M	L	Ø	Material	Acabado Finish	
1360.94	M10	15	9	acero/steel	zincado/zinc	100
1360.95	M8	25	10	acero/steel	zincado/zinc	100
1360.96	M8	15	10	acero/steel	zincado/zinc	100
1360.97	M10	15	10	acero/steel	zincado/zinc	100
1360.98	M10	35	10	acero/steel	zincado/zinc	100

CAMARENA PL Rueda giratoria clásica tipo camarera con placa Ø105 H123
Swivel castor with plate



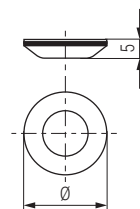
Código Code	Material	Acabado Finish	
381.50	acero-zamak steel-zamac	bronce bronze	30
381.51	acero-zamak steel-zamac	latonado brass plating	28
381.53	acero-zamak steel-zamac	cromo chrome	24

CAMARENA EC Rueda giratoria clásica tipo camarera
Swivel castor with pin



Código Code	Material	Acabado Finish	
381.52	acero-zamak steel-zamac	bronce bronze	28
381.54	acero-zamak steel-zamac	latonado brass plating	24

RETO Deslizante redondo base PTFE con adhesivo
Round non-slip PTFE rubber with adhesive



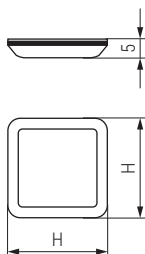
Blister

Código Code	Ø	Material Material	Acabado Finish	Blister
595.181	20	PTFE	gris/grey	8
595.182	25	PTFE	gris/grey	8
595.183	30	PTFE	gris/grey	8
595.184	40	PTFE	gris/grey	4
595.185	50	PTFE	gris/grey	4
595.186	60	PTFE	gris/grey	2
595.187	70	PTFE	gris/grey	2

Caja/ Box

Código Code	Ø	Material Material	Acabado Finish	Caja/ Box
595.81	20	PTFE	gris/grey	200
595.82	25	PTFE	gris/grey	200
595.83	30	PTFE	gris/grey	200
595.84	40	PTFE	gris/grey	100
595.85	50	PTFE	gris/grey	100
595.86	60	PTFE	gris/grey	50
595.87	70	PTFE	gris/grey	50

FLON Deslizante cuadrado base PTFE con adhesivo
Square non-slip PTFE rubber with adhesive



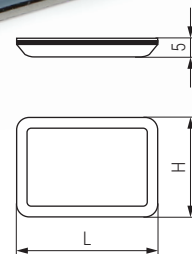
Blister

Código Code	H	Material Material	Acabado Finish	Blister
595.191	24x24	PTFE	gris/grey	8
595.192	30x30	PTFE	gris/grey	8

Caja/ Box

Código Code	H	Material Material	Acabado Finish	Caja/ Box
595.91	24x24	PTFE	gris/grey	200
595.92	30x30	PTFE	gris/grey	200

GLON Deslizante rectangular base PTFE con adhesivo
Rectangular non-slip PTFE rubber with adhesive



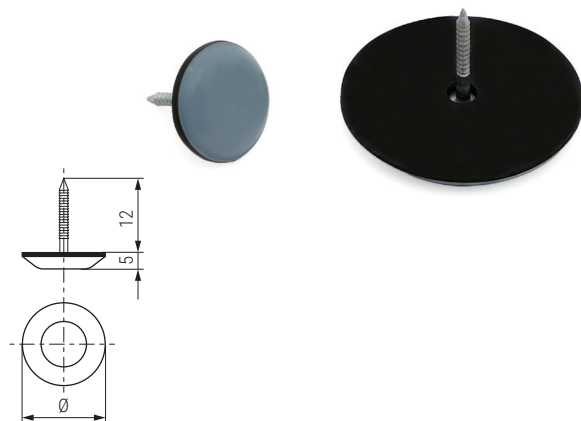
Blister

Código Code	H	L	Material Material	Acabado Finish	Blister
595.196	24	34	PTFE	gris/grey	8
595.197	24	100	PTFE	gris/grey	4

Caja/ Box

Código Code	H	L	Material Material	Acabado Finish	Caja/ Box
595.96	24	34	PTFE	gris/grey	200
595.97	24	100	PTFE	gris/grey	100

TEFLO Deslizante con base PTFE. Con clavo
Non-slip PTFE rubber with nail



Blister

Código Code	Ø	Material	Acabado Finish	
595.171	20	PTFE	gris/grey	8
595.172	25	PTFE	gris/grey	8
595.173	30	PTFE	gris/grey	8
595.174	40	PTFE	gris/grey	4

Caja/ Box

Código Code	Ø	Material	Acabado Finish	
595.71	20	PTFE	gris/grey	200
595.72	25	PTFE	gris/grey	200
595.73	30	PTFE	gris/grey	200
595.74	40	PTFE	gris/grey	100

ABAX Deslizante con base metálica
Non-slip with nail



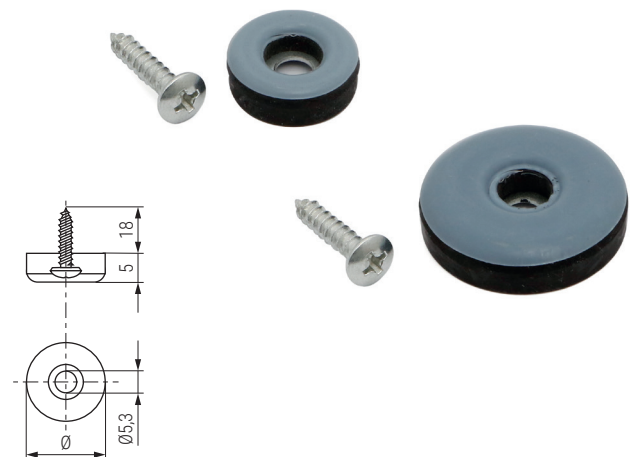
Blister

Código Code	Ø	H	Material	Acabado Finish	
595.101	18	11	hierro-plástico/steel-plastic	níquel-negro/nickel-black	8
595.102	20	13	hierro-plástico/steel-plastic	níquel-negro/nickel-black	8
595.103	25	15	hierro-plástico/steel-plastic	níquel-negro/nickel-black	8
595.104	30	15	hierro-plástico/steel-plastic	níquel-negro/nickel-black	8
595.105	35	20	hierro-plástico/steel-plastic	níquel-negro/nickel-black	4

Caja/ Box

Código Code	Ø	H	Material	Acabado Finish	
595.2	20	13	hierro-plástico/steel-plastic	níquel-negro/nickel-black	200
595.3	25	15	hierro-plástico/steel-plastic	níquel-negro/nickel-black	200
595.4	30	15	hierro-plástico/steel-plastic	níquel-negro/nickel-black	200

CRATE Deslizante con base PTFE. Con tornillo
Non-slip PTFE rubber with screw



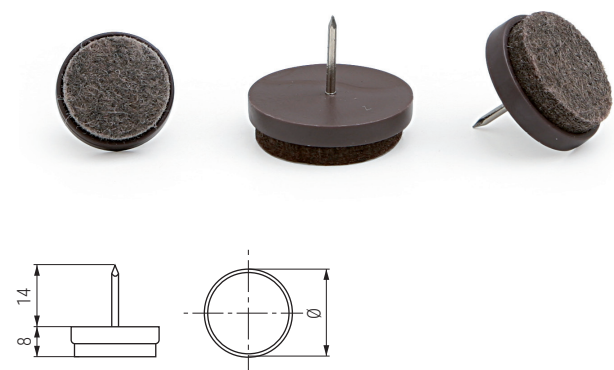
Blister

Código Code	Ø	Material	Acabado Finish	
595.176	19	PTFE	gris/grey	8
595.177	25	PTFE	gris/grey	8
595.178	30	PTFE	gris/grey	8
595.179	38	PTFE	gris/grey	8

Caja/ Box

Código Code	Ø	Material	Acabado Finish	
595.76	19	PTFE	gris/grey	200
595.77	25	PTFE	gris/grey	200
595.78	30	PTFE	gris/grey	200
595.79	38	PTFE	gris/grey	100

KOFU Deslizante quitarruido con fieltro
Non-slip felt with nail



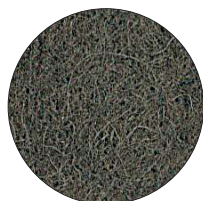
Blister


Código Code	Ø	Material	Acabado Finish	
595.111	17	fieltro-plástico/felt-plastic	marrón/brown	8
595.112	20	fieltro-plástico/felt-plastic	marrón/brown	8
595.113	24	fieltro-plástico/felt-plastic	marrón/brown	8
595.114	28	fieltro-plástico/felt-plastic	marrón/brown	8
595.115	35	fieltro-plástico/felt-plastic	marrón/brown	4

Caja/ Box

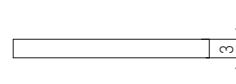
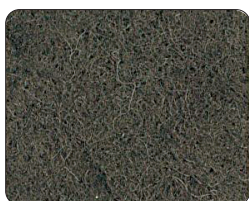
Código Code	Ø	Material	Acabado Finish	
595.11	17	fieltro-plástico/felt-plastic	marrón/brown	200
595.12	20	fieltro-plástico/felt-plastic	marrón/brown	200
595.13	24	fieltro-plástico/felt-plastic	marrón/brown	200
595.14	28	fieltro-plástico/felt-plastic	marrón/brown	200


DEFA Filtro deslizante redondo con adhesivo
Round non-slip rubber with adhesive



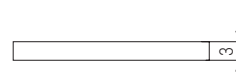
		Marrón Brown
Medidas Size mm.		Código Code
Ø12	384	988.201
Ø14	180	988.202
Ø16	150	988.203
Ø18	120	988.204
Ø20	150	988.205
Ø22	150	988.206
Ø24	108	988.207
Ø26	96	988.208
Ø28	72	988.209
Ø30	63	988.210
Ø32	42	988.211
Ø34	36	988.212
Ø36	54	988.213
Ø40	36	988.214
Ø45	30	988.215
Ø50	24	988.216
Ø55	24	988.217
Ø60	24	988.218
Ø75	9	988.219
Ø100	6	988.220


GULO Filtro deslizante rectangular con adhesivo
Rectangular non-slip rubber with adhesive



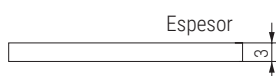
		Marrón Brown
Medidas Size mm.		Código Code
20x40	60	988.261
25x50	54	988.262
30x65	48	988.263
50x100	15	988.264

ALOA Filtro deslizante cuadrado con adhesivo
Square non-slip rubber with adhesive

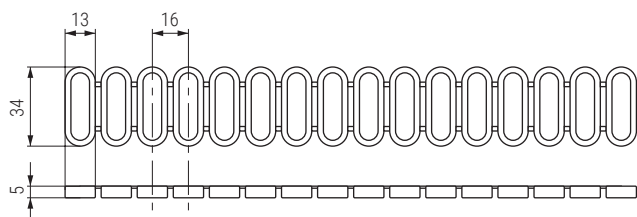
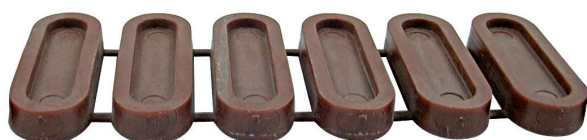


		Marrón Brown
Medidas Size mm.		Código Code
20x20	150	988.241
25x25	96	988.242
30x30	63	988.243
34x34	36	988.244
45x45	30	988.245
60x60	24	988.246
75x75	9	988.247
100x100	6	988.248

ROLF Rollo de fieltro deslizante adhesivo 25m.
Felt roll



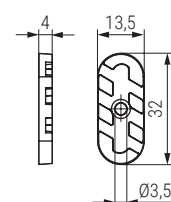
PISANO Deslizante en tira para grapar. Tiras de 16
Non-slip rubber



- Cada tira 16 unidades
- Every strip 16 units

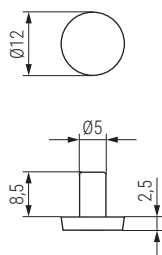
Código Code	Material	Acabado Finish	
9033.116	plástico/plastic	blanco/white	1.920
9033.117	plástico/plastic	marrón/brown	1.920
9033.118	plástico/plastic	negro/black	1.920

ZOLA Deslizante-quitarruido
Non-slip rubber



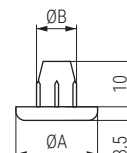
Código Code	Material	Acabado Finish	
570.81	plástico/plastic	blanco/white	1.000
570.82	plástico/plastic	negro/black	1.000
570.83	plástico/plastic	marrón/brown	1.000

ZEN Deslizante redondo de embutir Ø5mm.
Non-slip glide



Código Code	Material	Acabado Finish	
5022.42	plástico/plastic	negro/black	5.000

NITRO Deslizante redondo de embutir Ø8
Non-slip glide



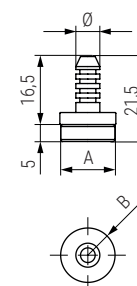
Código Code	ØA	ØB	Material	Acabado Finish	
236.84	16	6,5	plástico/plastic	negro/black	1.000
529.11	18	8	plástico/plastic	negro/black	5.000

OTTO Deslizante-quitarruido Ø15
Round non-slip



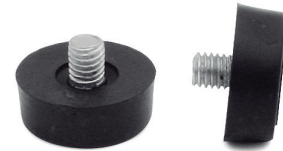
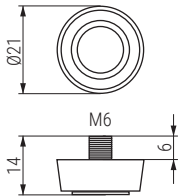
Código Code	Material	Acabado Finish	
842.11	plástico/plastic	blanco/white	100
842.12	plástico/plastic	marrón/brown	100
842.13	plástico/plastic	negro/black	100

FELT Deslizante quitarruido con fieltro
Plastic glide with felt



Código Code	A	B	Ø	Material Material	Acabado Finish	
988.2	13	14	6	plástico/plastic	negro/black	500
988.3	15	17	8	plástico/plastic	negro/black	500

NIBA Pie nivelador M6 Leveler



Código
Code

Material

Acabado
Finish



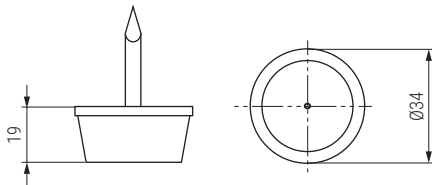
1190.135

hierro-plástico/steel-plastic

zincado-negro/zinc-black

6/1800

YOTA Pata de plástico con clavo Ø34 Plastic sofa leg



Código
Code

Material

Acabado
Finish



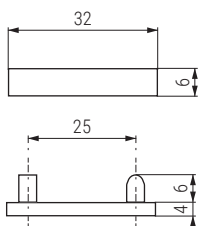
1165.3

plástico/plastic

negro/black

1.000

TAPA PENNY Tapa antideslizante Non-slip glide



Código
Code

Material

Acabado
Finish



1439.199

plástico/plastic

negro/black

1.000